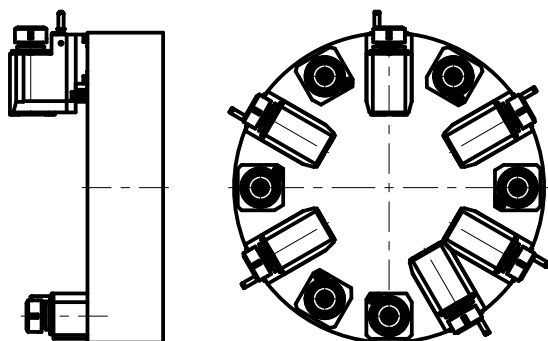
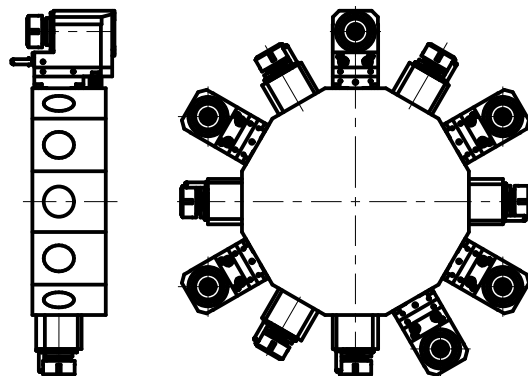


SAUTER VDI 25 DIN-5480

**TORRETTE ASSIALI
AXIAL TURRETS
AXIAL REVOLVER**

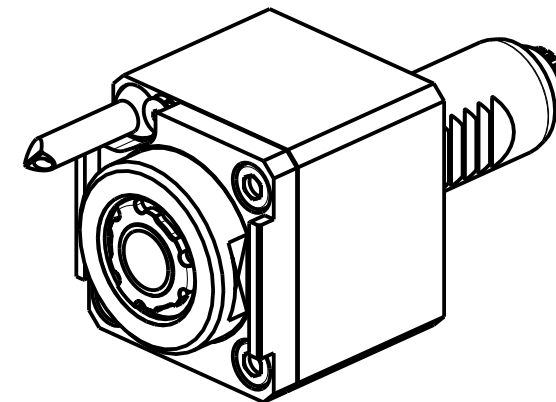
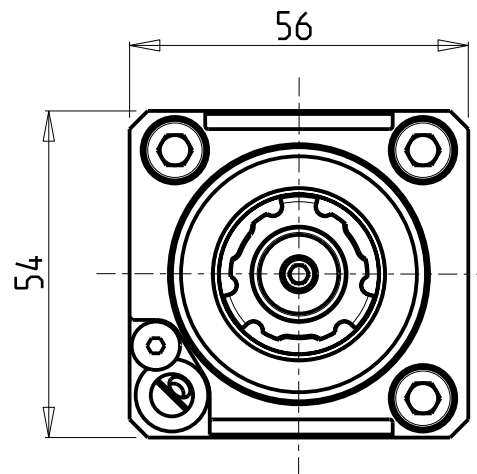
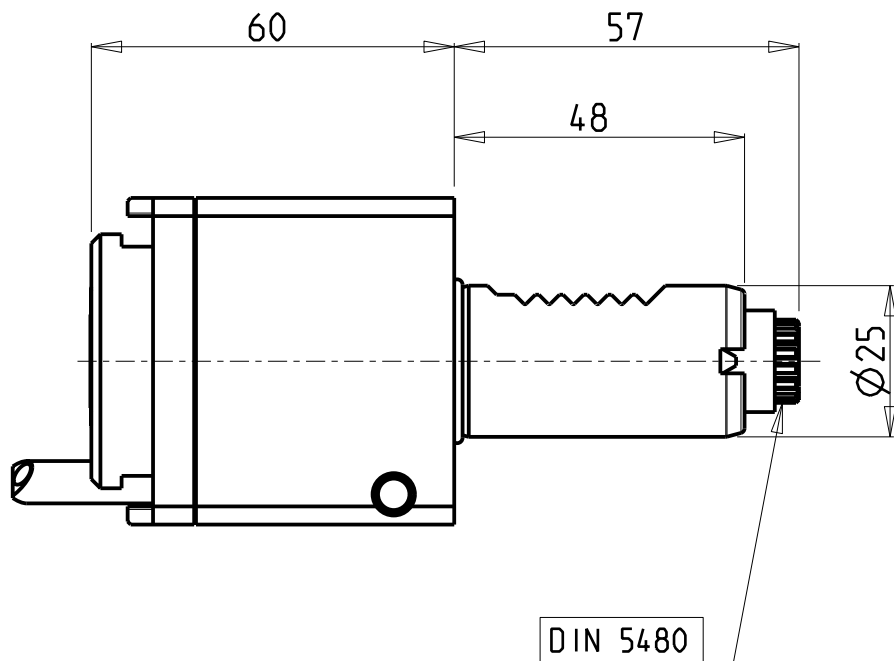


**TORRETTE RADIALI
RADIAL TURRETS
RADIAL REVOLVER**



SAUTER VDI 25 DIN-5480

		PAGINA Page Seite
MODULO MOTORIZZATO ASSIALE VDI25 DIN 5480 Axial driven tool VDI25 DIN 5480 Axial angetriebenes Werkzeug VDI25 DIN 5480		SAU017.1.00
MODULO MOTOR ASSIALE MOLTIPLICATO I=1:2 DISASSATO 36mm VDI25 DIN 5480 Axial geared-up I=1:2 driven tool re-directed by 36mm VDI25 DIN 5480 Axial angetriebenes Werkzeug uebersetzt I=1:2 achsversetzt um 36mm VDI25 DIN 5480		SAU017.1.60
MODULO MOTORIZZATO RADIALE VDI25 DIN 5480 Radial driven tool VDI25 DIN 5480 Radial angetriebenes Werkzeug VDI25 DIN 5480		SAU018.1.00



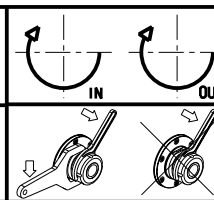
DIN 5480

- Chiave inclusa
- Key included
- Schluessel inbegriffen

Cod. MT	Mandrino Spindle Spindel	I	RPM	Coppia Max Max Torque Max Drehmoment	Lubrificazione est. Ext. coolant Ausseukuehlung	CHIAVI NON INCLUSE Keys not included Schluessel nicht einbegriffen		
SAU0390320	ERA20	1:1	6000	25Nm	X	CHUB22	CHTAER20ZC *	OKU0290009 *

SAUTER
VDI 25

MODULO MOTORIZZATO ASSIALE VDI25 DIN 5480
Axial driven tool VDI25 DIN 5480
Axial angetriebenes Werkzeug VDI25 DIN 5480



M.T. srl
Via Casino Albini 480
Tel. 0541/956034-957884
Fax 0541/956341
47842 S. GIOVANNI IN M. (RN)
e-mail: mtma@mtmarchetti.com
<http://www.mtmarchetti.com>

PRODUZIONE MODULI ROTANTI



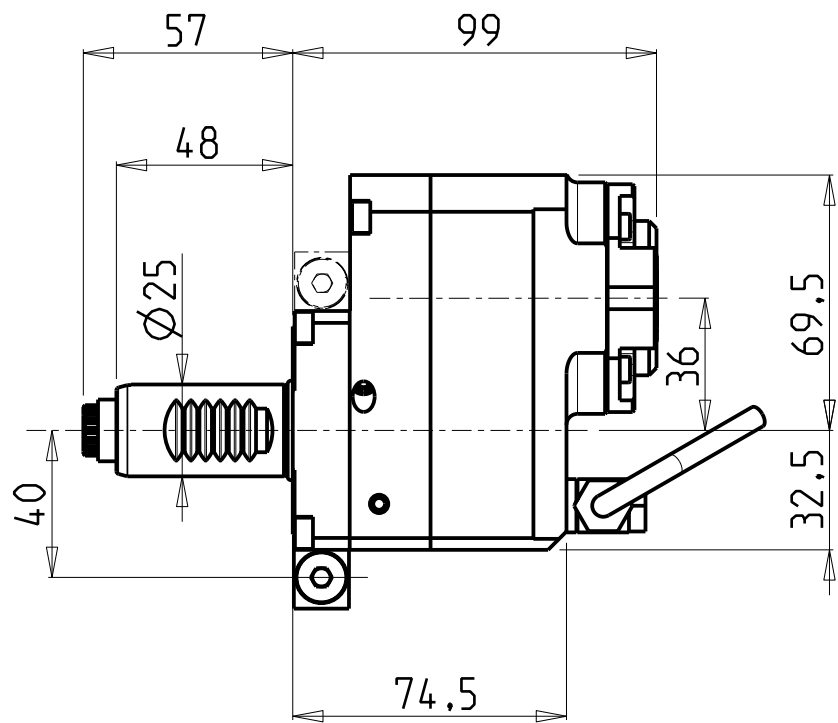
PAGINA SAU017-1-00

Subject to change without notice.

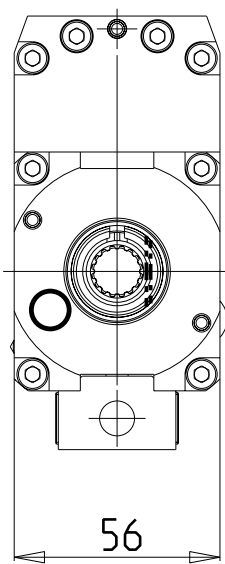
10/2018

ATTENZIONE - ATTENTION - ACHTUNG

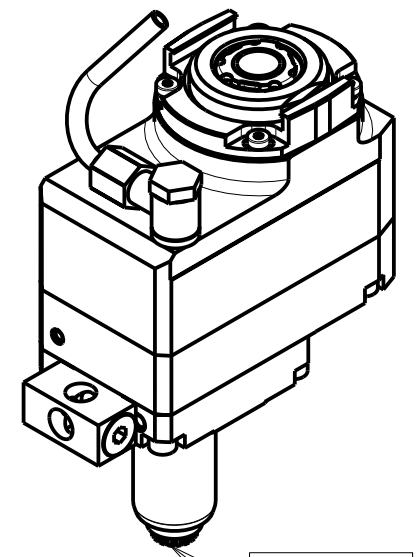
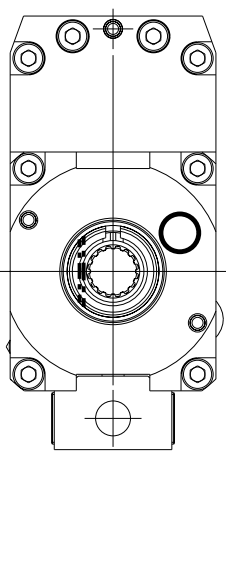
- Per lo smontaggio degli utensili utilizzare sempre la chiave di contrasto come indicato nel manuale d'uso.
- For disassembly of the tools use always the contrast key as mentioned in the user instructions.
- Fuer das Abmontieren der Werkzeuge immer den Gegenschlüssel benutzen wie in der Bedienungsanleitung erwäohnt.



versione dx
right version
version rechts



versione sx
left version
version links



DIN 5480

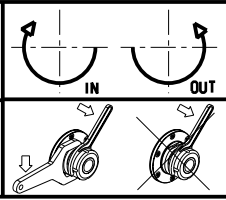
- Chiave inclusa
- Key included
- Schlüssel inbegriffen

Cod. MT		Mandrino Spindle Spindel	I	RPM	Coppia Max Max Torque Max Drehmoment	Lubrificazione int. Coolant through Innenkuehlung	Lubrificazione est. Ext. coolant Aussenkuehlung	CHIAVI NON INCLUSE Keys not included Schlüssel nicht einbegriffen		
versione dx right version version rechts	versione sx left version version links							CHUB22	CHTAER20ZC	OKU0290009
SAU0566120	SAU0567120	ERA20	1:2	12000	15Nm	-	X	CHUB22	CHTAER20ZC	OKU0290009
SAU0566220	SAU0567220	ERA20	1:2	12000	15Nm	P=70bar	X	CHUB22	CHTAER20ZC	OKU0290009

SAUTER
VDI 25

MODULO MOTORIZZATO ASSIALE MOLTIPLICATO I=1:2 DISASSATO 36mm VDI25 DIN 5480
Axial geared-up I=1:2 driven tool re-directed by 36mm VDI25 DIN 5480
Axial angetriebenes Werkzeug uebersetzt I=1:2 achsversetzt um 36mm VDI25 DIN 5480

Subject to change without notice.

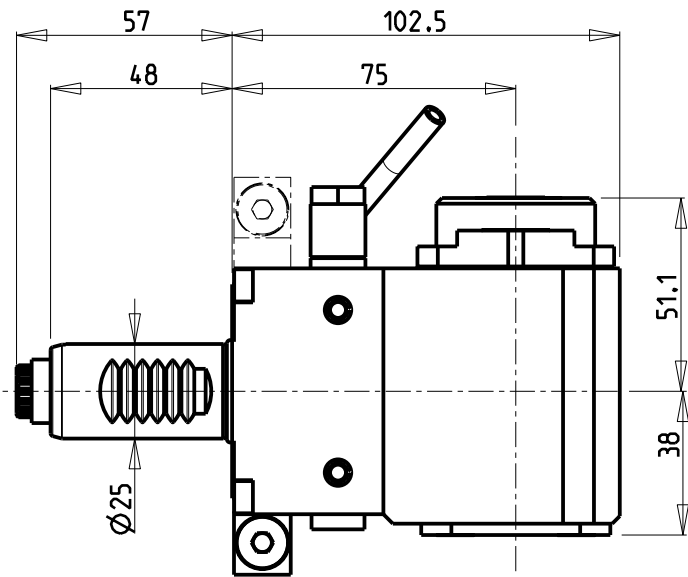


M.T. srl
Via Casino Albini 480
Tel. 0541/956034-957884
Fax 0541/956341
47842 S. GIOVANNI IN M. (RN)
e-mail: mtma@mtmarchetti.com
http://www.mtmarchetti.com

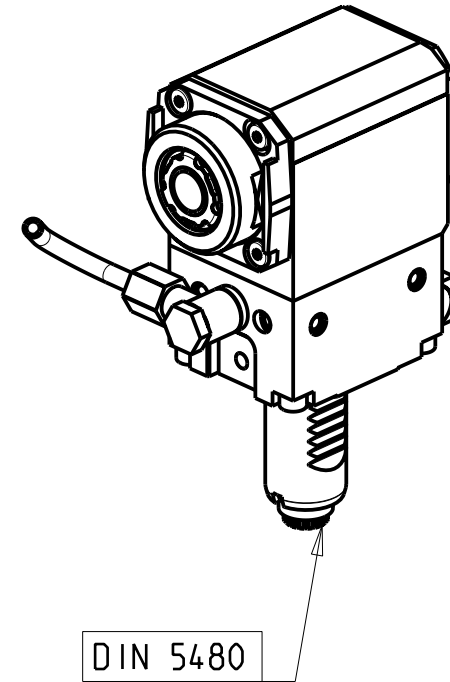
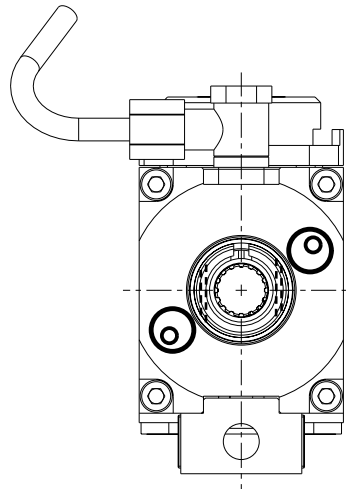
PRODUZIONE MODULI ROTANTI



PAGINA SAU017-1-60



versione universale
 universal version
 universal version



DIN 5480

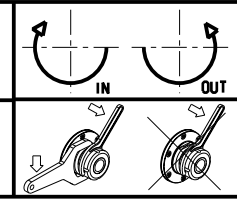
- Chiave inclusa
- Key included
- Schlüssel inbegriffen

Cod. MT	Mandrino Spindle Spindel	I	RPM	Coppia Max Max Torque Max Drehmoment	Lubrificazione est. Ext. coolant Aussenkuehlung	CHIAVI NON INCLUSE Keys not included Schlüssel nicht einbegriffen		
SAU04.02320	ERA20	1:1	6000	25Nm	X	CHUB22	CHTAER20ZC *	OKU0290009 *

SAUTER
 VDI 25

MODULO MOTORIZZATO RADIALE VDI25 DIN 5480
 Radial driven tool VDI25 DIN 5480
 Radial angetriebenes Werkzeug VDI25 DIN 5480

Subject to change without notice.



M.T. srl
 Via Casino Albini 480
 Tel. 0541/956034-957884
 Fax 0541/956341
 47842 S. GIOVANNI IN M. (RN)
 e-mail: mtma@mtmarchetti.com
 http://www.mtmarchetti.com

PRODUZIONE MODULI ROTANTI

PAGINA SAU018-1-00

