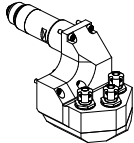
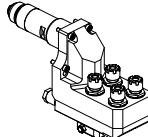
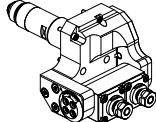
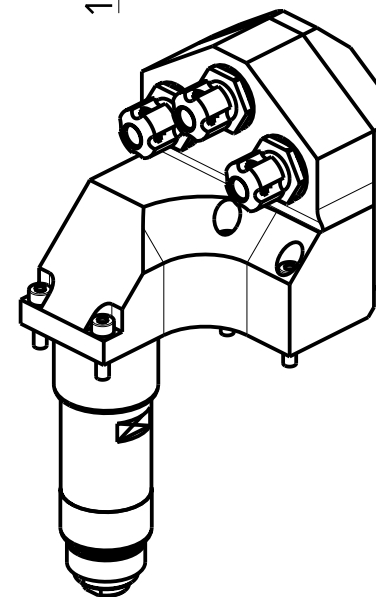
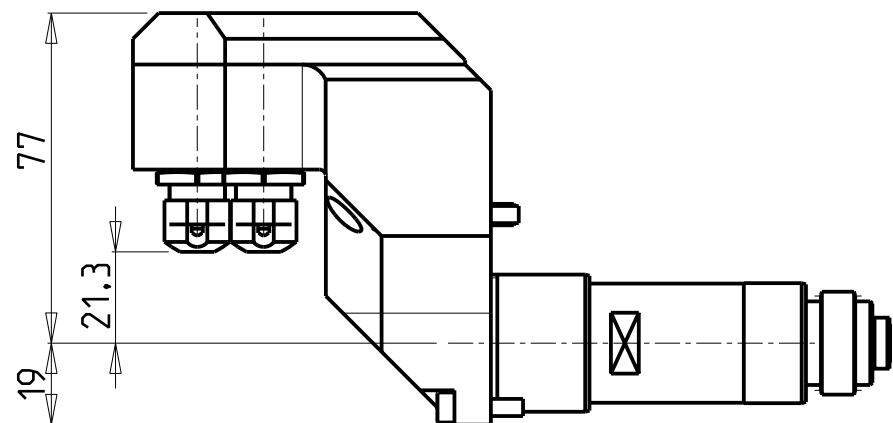
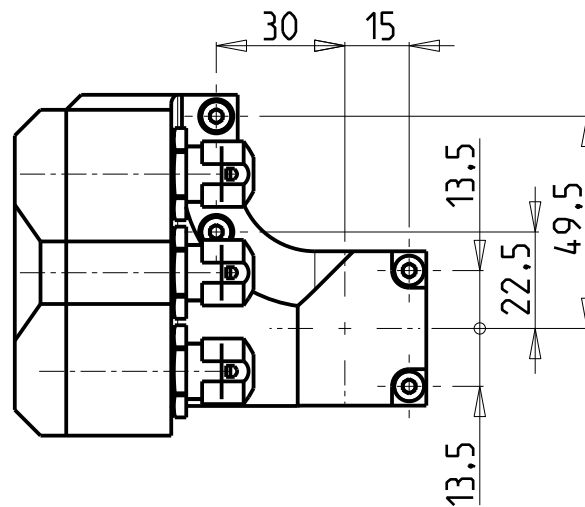
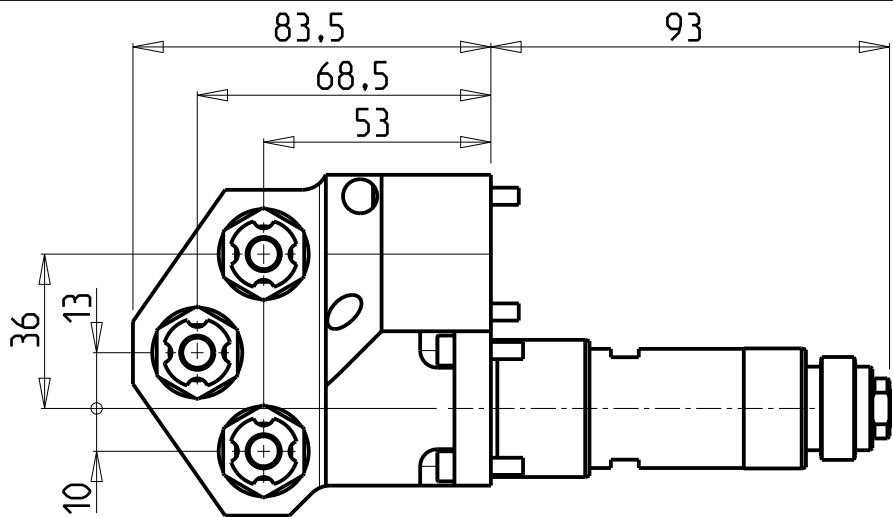


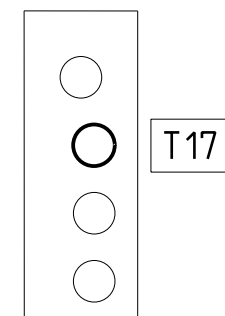
|  |   | PAGINA<br>Page<br>Seite |
|--|---|-------------------------|
| <p><b>MODULO MOTORIZZATO ASSIALE 3 USCITE</b><br/>Axial multiple 3 outlet driven tool<br/>Axial angetriebenes Mehrspindel-Werkzeug 3 Ausgaenge</p>   |  | NOM265.3.10             |
| <p><b>MODULO MOTORIZZATO ASSIALE 4 USCITE MOLTIPLICATO 1:1.2</b><br/>Axial geared-up 1=1:2 multiple 4 outlet driven tool<br/>Axial angetriebenes Mehrspindel-Werkzeug 4 Ausgaenge uebersetzt 1=1:2</p> |  | NOM271.3.00             |
| <p><b>MODULO MOTORIZZ. ORIENTABILE DOPPIO ±90°</b><br/>±90° double adjustable angle driven tool<br/>Doppel-Angetriebenes Werkzeug schwenkbar ±90°</p>  |  | NOM338.3.00             |





**ATTENZIONE - ATTENTION - ACHTUNG**

- Per lo smontaggio degli utensili utilizzare sempre la chiave di contrasto come indicato nel manuale d'uso.
- For disassembly of the tools use always the contrast key as mentioned in the user instructions.
- Fuer das Abmontieren der Werkzeuge immer den Gegenschlüssel benutzen wie in der Bedienungsanleitung erwäehnt.



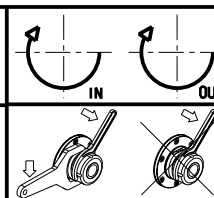
T17

| Cod. MT    | Mandrino<br>Spindle<br>Spindel | I   | RPM  | N°Utensili<br>N°Tools<br>N°Werkzeuge | Lubr.esterna<br>Ext. coolant<br>Aussenkehlung | CHIAVI NON INCLUSE<br>Keys not included<br>Schluessel nicht einbegriffen |            |
|------------|--------------------------------|-----|------|--------------------------------------|---|--|------------|
| SPC0991000 | ER11                           | 1:1 | 6000 | 3                                    | X   | CHMNER11   | CHUB19_SP3 |

NOMURA  
MOD: NN20UB8 - NN25UB8 - NN20U5

MODULO MOTORIZZATO ASSIALE 3 USCITE  
Axial multiple 3 outlet driven tool  
Axial angetriebenes Mehrspindel-Werkzeug 3 Ausgaenge

Subject to change without notice.



**M.T. srl**  
Via Casino Albini 480  
Tel. 0541/956034-957884  
Fax 0541/956341  
47842 S. GIOVANNI IN M. (RN)  
e-mail: mtma@mtmarchetti.com  
http://www.mtmarchetti.com

PRODUZIONE MODULI ROTANTI

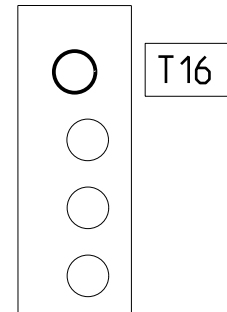
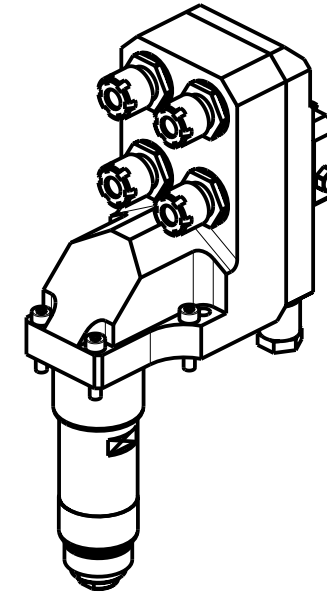
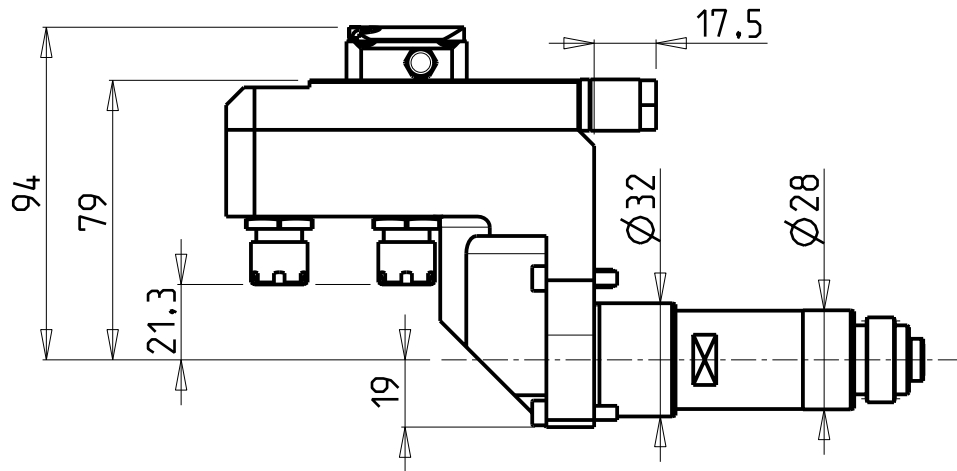
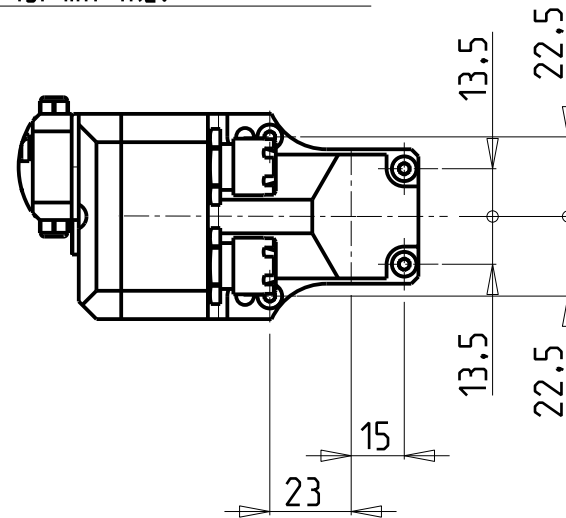
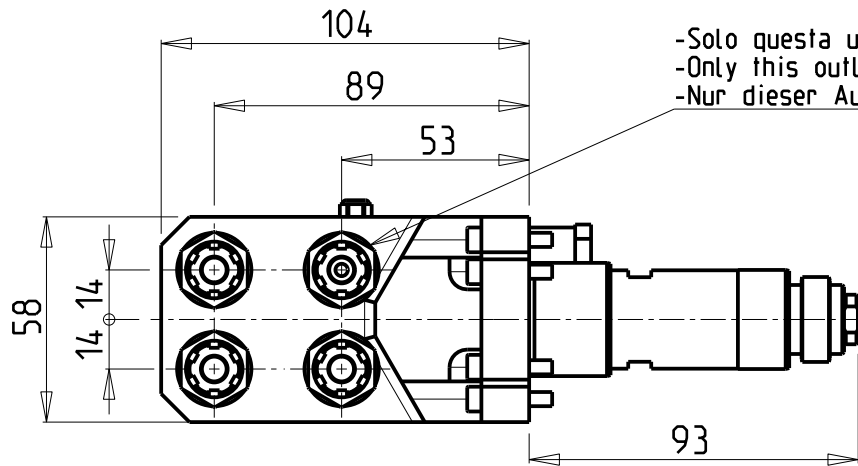


PAGINA NOM265-3-10

**ATTENZIONE - ATTENTION - ACHTUNG**

- Per lo smontaggio degli utensili utilizzare sempre la chiave di contrasto come indicato nel manuale d'uso.
- For disassembly of the tools use always the contrast key as mentioned in the user instructions.
- Fuer das Abmontieren der Werkzeuge immer den Gegenschlüssel benutzen wie in der Bedienungsanleitung erwaeht.

-Solo questa uscita è con lubrificazione interna.  
 -Only this outlet is with internal coolant.  
 -Nur dieser Ausgang ist mit IKZ.



| Cod. MT    | Mandrino Spindle Spindel | I   | RPM   | N°Utensili N°Tools N°Werkzeuge | Lubrificazione int. Coolant through Innenkuehlung | Lubr.esterna Ext. coolant Aussenkuehlung | CHIAVI NON INCLUDE Keys not included Schluessel nicht einbegriffen |            |
|------------|--------------------------|-----|-------|--------------------------------|---|--|--|------------|
| NMR0100111 | ER11                     | 1:2 | 12000 | 4                              | P=25bar   | X  | CHMNER11   | CHUB19_SP3 |

NOMURA

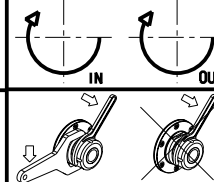
MOD: NN20UB8 - NN25UB8 - NN20U5

MODULO MOTORIZZATO ASSIALE 4 USCITE MOLTIPLICATO I=1:2

Axial geared-up I=1:2 multiple 4 outlet driven tool

Axial angetriebenes Mehrspindel-Werkzeug 4 Ausgaenge uebersetzt I=1:2

Subject to change without notice.



**M.T. srl**

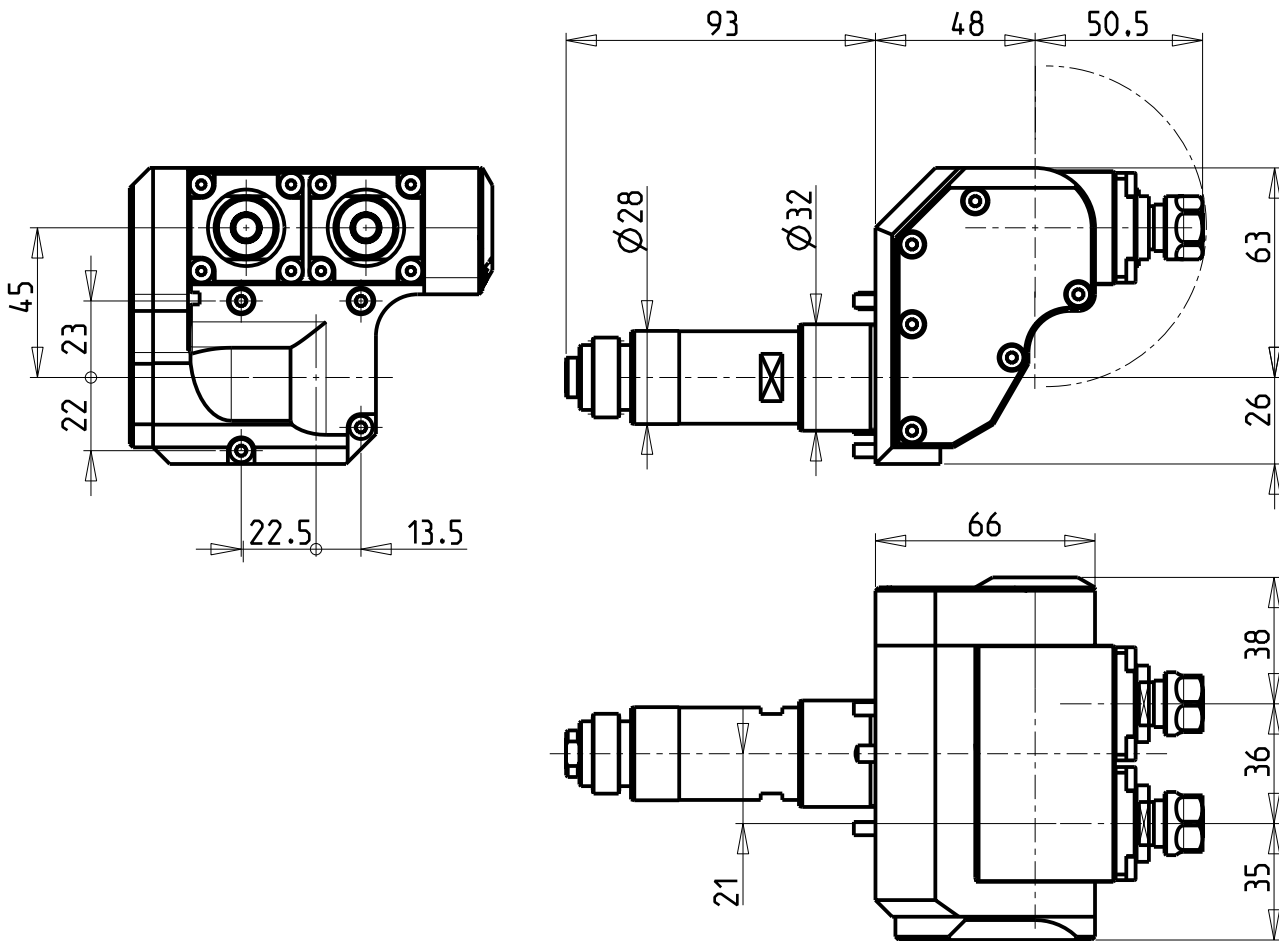
Via Casino Albini 480  
 Tel. 0541/956034-957884  
 Fax 0541/956341

47842 S. GIOVANNI IN M. (RN)  
 e-mail: mtma@mtmarchetti.com  
 http://www.mtmarchetti.com

PRODUZIONE MODULI ROTANTI

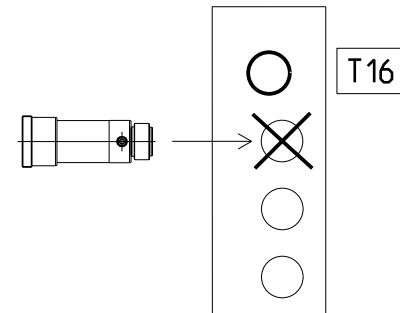
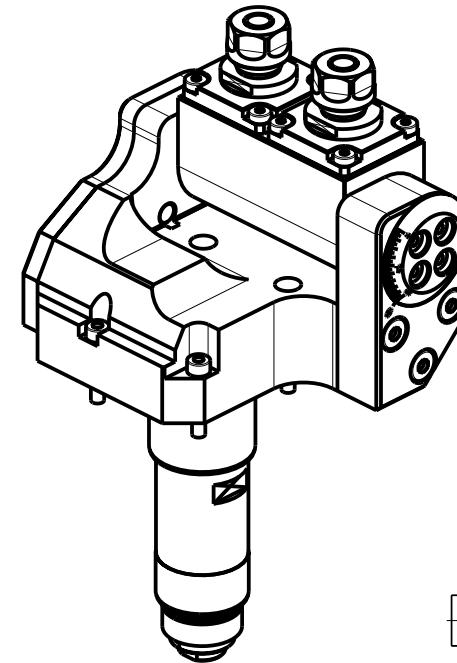


PAGINA NOM271-3-00



**ATTENZIONE - ATTENTION - ACHTUNG**

- Per lo smontaggio degli utensili utilizzare sempre la chiave di contrasto come indicato nel manuale d'uso.
- For disassembly of the tools use always the contrast key as mentioned in the user instructions.
- Fuer das Abmontieren der Werkzeuge immer den Gegenschlüssel benutzen wie in der Bedienungsanleitung erwaeht.

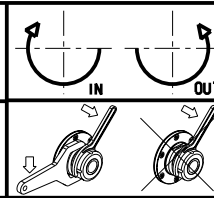


| Cod. MT    | Mandrino Spindle Spindel | I   | RPM  | Lubrificazione est. Ext. coolant Aussenkuehlung | CHIAVI INCLUSE Keys included Schluessel inbegriffen |
|------------|--------------------------|-----|------|---|---|
| NMR0110211 | ER11                     | 1:1 | 6000 | X   | CHUB17 CHUB19_SP3                                   |

NOMURA  
MOD: NN20UB8 - NN25UB8 - NN20U5

MODULO MOTORIZZATO ORIENTABILE DOPPIO ±90°  
±90° double adjustable angle driven tool  
Doppel-Angetriebenes Werkzeug schwenkbar ±90°

Subject to change without notice.



**M.T. srl**  
Via Casino Albini 480  
Tel. 0541/956034-957884  
Fax 0541/956341  
47842 S. GIOVANNI IN M. (RN)  
e-mail: mtma@mtmarchetti.com  
http://www.mtmarchetti.com

PRODUZIONE MODULI ROTANTI



PAGINA NOM338-3-00

