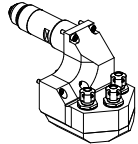
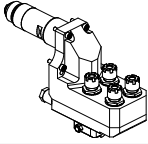
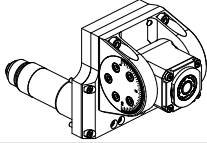
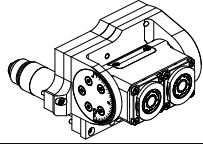
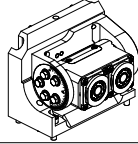
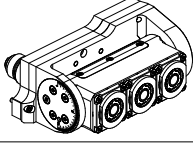
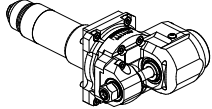
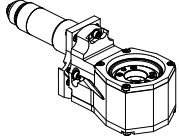
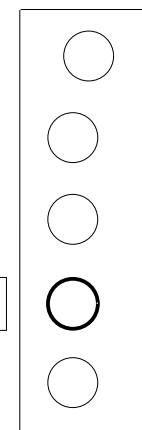
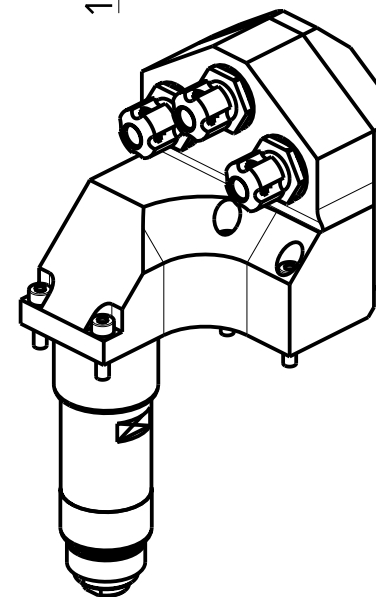
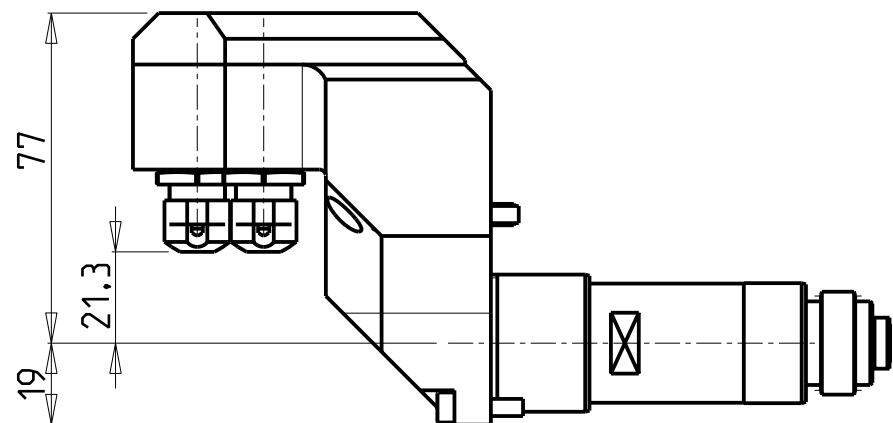
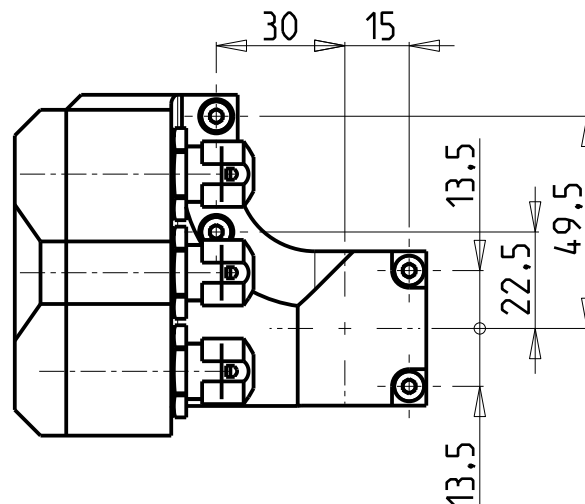
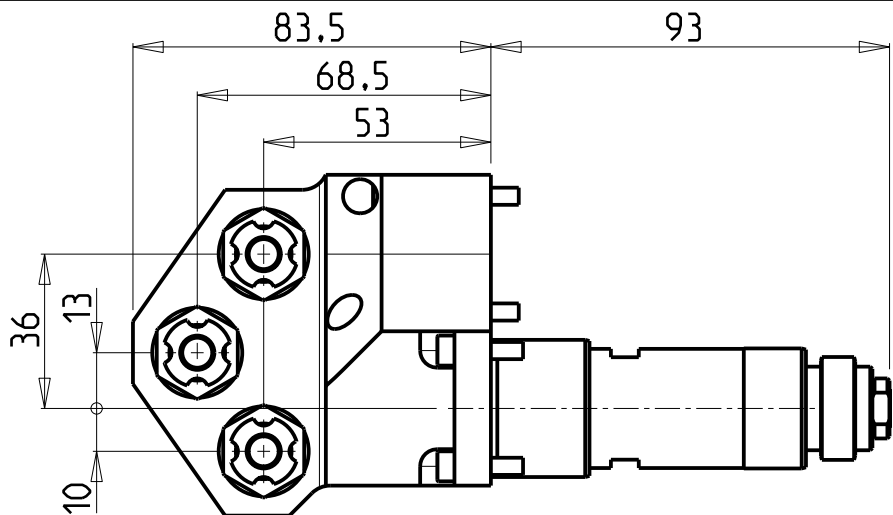


		PAGINA Page Seite
<p>MODULO MOTORIZZATO ASSIALE 3 USCITE Axial multiple 3 outlet driven tool Axial angetriebenes Mehrspindel-Werkzeug 3 Ausgaenge</p>		NOM265.1.10
<p>MODULO MOTORIZZATO ASSIALE 4 USCITE MOLTIPLICATO 1=1:2 Axial geared-up 1=1:2 multiple 4 outlet driven tool Axial angetriebenes Mehrspindel-Werkzeug 4 Ausgaenge uebersetzt 1=1:2</p>		NOM271.1.00
<p>MODULO MOTORIZZATO ORIENTABILE ±90° ±90° adjustable angle driven tool Angetriebenes Werkzeug schwenkbar ±90°</p>		NOM335.1.00
<p>MODULO MOTORIZZATO ORIENTABILE DOPPIO ±90° ±90° double adjustable angle driven tool Doppel-Angetriebenes Werkzeug schwenkbar ±90°</p>		NOM338.1.00
<p>MODULO MOTORIZZATO ORIENTABILE DOPPIO ±90° PER CONTROMANDRINO ±90° double adjustable angle driven tool for subspindle Doppel-Angetriebenes Werkzeug schwenkbar ±90° fuer Gegenspindle</p>		NOM338.1.10
<p>MODULO MOTORIZZATO ORIENTABILE TRIPLO ±90° ±90° triple adjustable angle driven tool Dreifach-Angetriebenes Werkzeug schwenkbar ±90°</p>		NOM338.1.20
<p>MODULO MOTORIZZATO PORTACREATORE Driven gear hobber Angetriebenes Zahnradwaelzfraes-Werkzeug</p>		NOM340.1.00
<p>MODULO MOTORIZZATO TURBINATORE RIDOTTO 1=2:1 Driven whirling tool geared-down 1=2:1 Gewindewirbeleinrichtung untersetzt 1=2:1</p>		NOM370.1.00



ATTENZIONE - ATTENTION - ACHTUNG

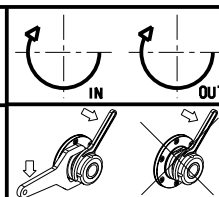
- Per lo smontaggio degli utensili utilizzare sempre la chiave di contrasto come indicato nel manuale d'uso.
- For disassembly of the tools use always the contrast key as mentioned in the user instructions.
- Fuer das Abmontieren der Werkzeuge immer den Gegenschlüssel benutzen wie in der Bedienungsanleitung erwäehnt.

Cod. MT	Mandrino Spindle Spindel	I	RPM	N°Utensili N°Tools N°Werkzeuge	Luhr.esterna Ext. coolant Aussenkehlung	CHIAVI NON INCLUSE Keys not included Schluessel nicht einbegriffen	
SPC0991000	ER11	1:1	6000	3	X	CHMNER11	CHUB19_SP3

NOMURA
MOD: NN20J - NN20J2 - NN20JS

MODULO MOTORIZZATO ASSIALE 3 USCITE
Axial multiple 3 outlet driven tool
Axial angetriebenes Mehrspindel-Werkzeug 3 Ausgaenge

Subject to change without notice.

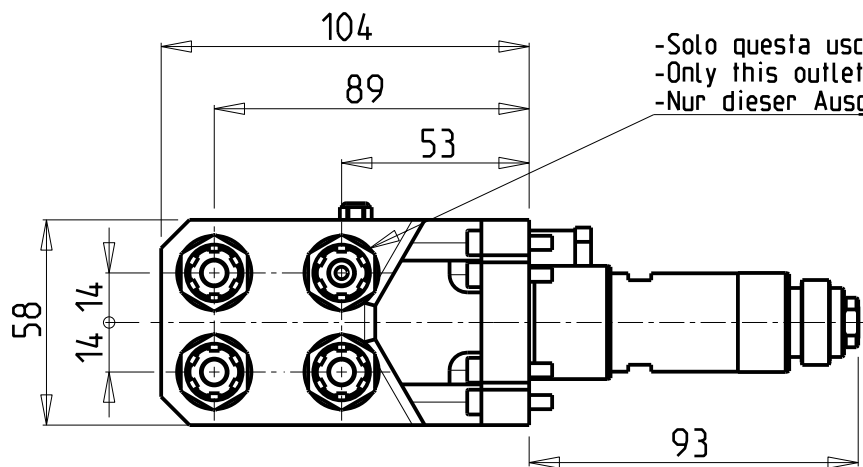


M.T. srl
Via Casino Albini 480
Tel. 0541/956034-957884
Fax 0541/956341
47842 S. GIOVANNI IN M. (RN)
e-mail: mtma@mtmarchetti.com
http://www.mtmarchetti.com

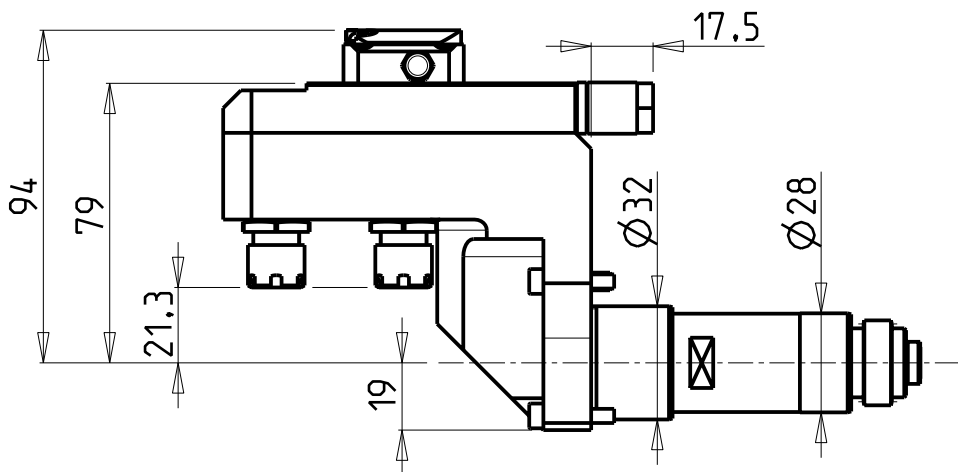
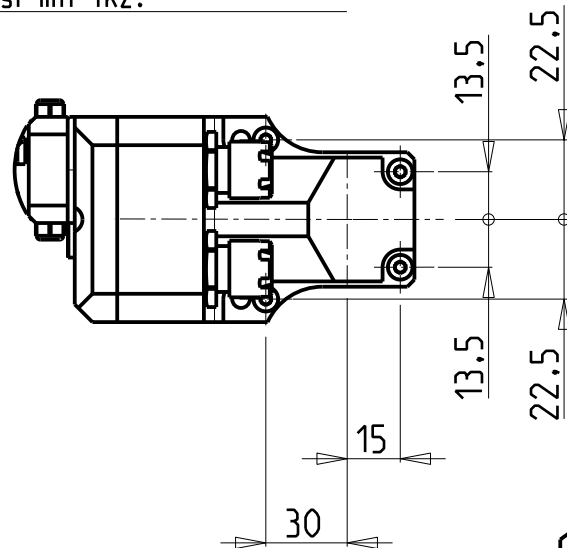
PRODUZIONE MODULI ROTANTI



PAGINA NOM265-1-10

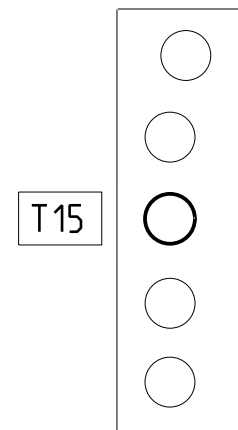
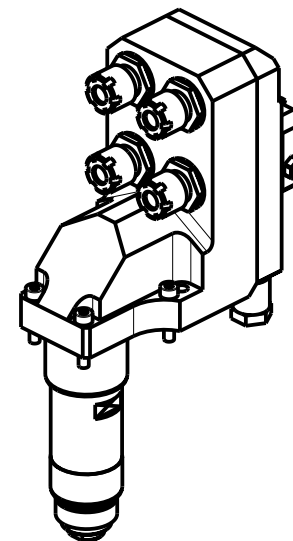


-Solo questa uscita è con lubrificazione interna.
 -Only this outlet is with internal coolant.
 -Nur dieser Ausgang ist mit IKZ.



ATTENZIONE - ATTENTION - ACHTUNG

- Per lo smontaggio degli utensili utilizzare sempre la chiave di contrasto come indicato nel manuale d'uso.
- For disassembly of the tools use always the contrast key as mentioned in the user instructions.
- Fuer das Abmontieren der Werkzeuge immer den Gegenschlüssel benutzen wie in der Bedienungsanleitung erwaeht.



T15

Cod. MT	Mandrino Spindle Spindel	I	RPM	N°Utensili N°Tools N°Werkzeuge	Lubrificazione int. Coolant through Innenkuehlung	Lubr.esterna Ext. coolant Aussenkuehlung	CHIAVI NON INCLUDE Keys not included Schluessel nicht einbegriffen	
NMR0100111	ER11	1:2	12000	4	P=25bar	X	CHMNER11	CHUB19_SP3

NOMURA

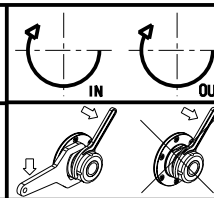
MOD: NN20J - NN20J2 - NN20JS

MODULO MOTORIZZATO ASSIALE 4 USCITE MOLTIPLICATO I=1:2

Axial geared-up I=1:2 multiple 4 outlet driven tool

Axial angetriebenes Mehrspindel-Werkzeug 4 Ausgaenge uebersetzt I=1:2

Subject to change without notice.



M.T. srl

Via Casino Albini 480
 Tel. 0541/956034-957884
 Fax 0541/956341

47842 S. GIOVANNI IN M. (RN)
 e-mail: mtma@mtmarchetti.com
 http://www.mtmarchetti.com

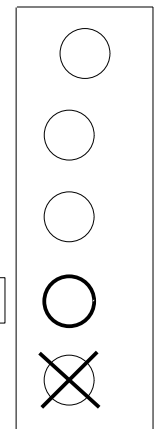
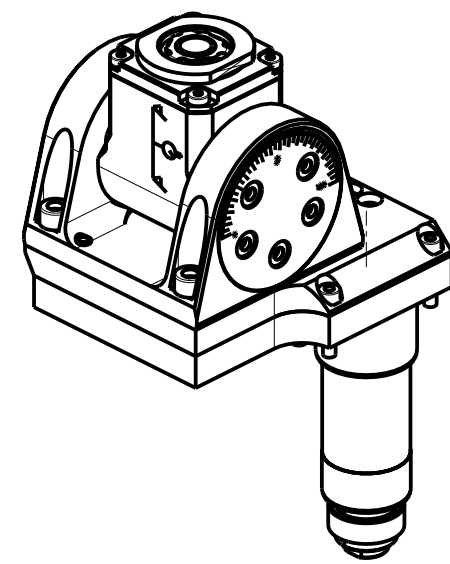
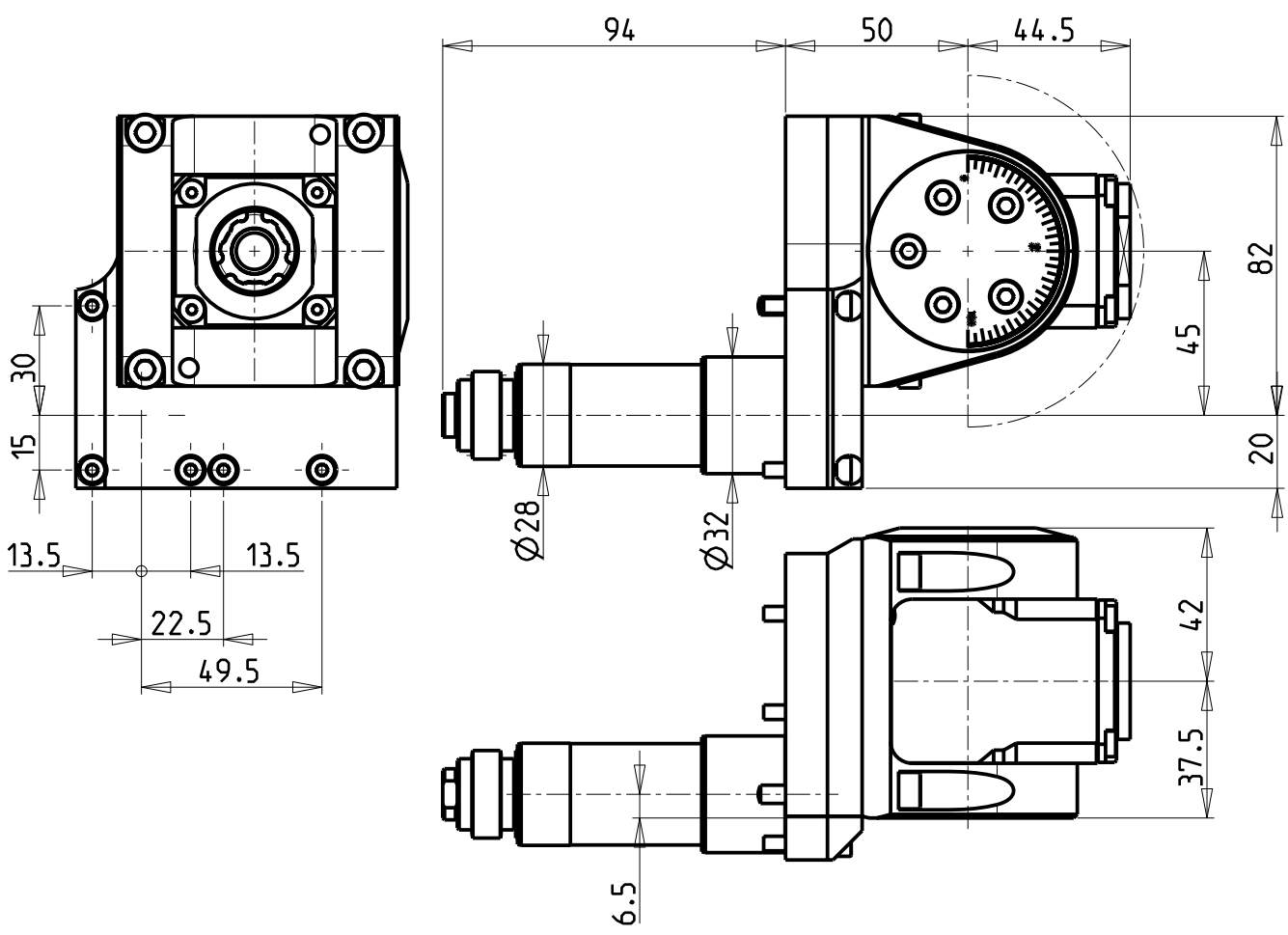
PRODUZIONE MODULI ROTANTI



PAGINA NOM271-1-00

ATTENZIONE - ATTENTION - ACHTUNG

- Per lo smontaggio degli utensili utilizzare sempre la chiave di contrasto come indicato nel manuale d'uso.
- For disassembly of the tools use always the contrast key as mentioned in the user instructions.
- Fuer das Abmontieren der Werkzeuge immer den Gegenschlüssel benutzen wie in der Bedienungsanleitung erwaeht.



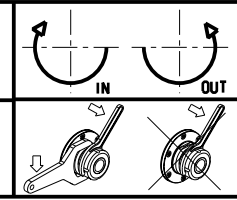
T16

Cod. MT	Mandrino Spindle Spindel	I	RPM	Lubrificazione est. Ext. coolant Aussenkuehlung	CHIAVI INCLUSE Keys included Schlüssel inbegriffen		
SPC0801000	ERA16	1:1	6000	X	CHUB32	CHUB19_SP3	CHTAER16ZC

NOMURA
MOD: NN20J - NN20J2 - NN20JS

MODULO MOTORIZZATO ORIENTABILE ±90°
±90° adjustable angle driven tool
Angetriebenes Werkzeug schwenkbar ±90°

Subject to change without notice.



M.T. srl
Via Casino Albini 480
Tel. 0541/956034-957884
Fax 0541/956341
47842 S. GIOVANNI IN M. (RN)
e-mail: mtma@mtmarchetti.com
http://www.mtmarchetti.com

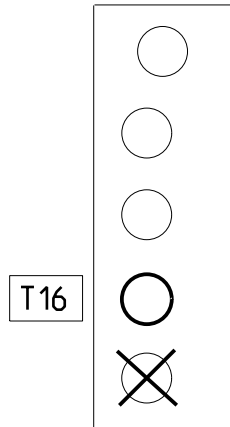
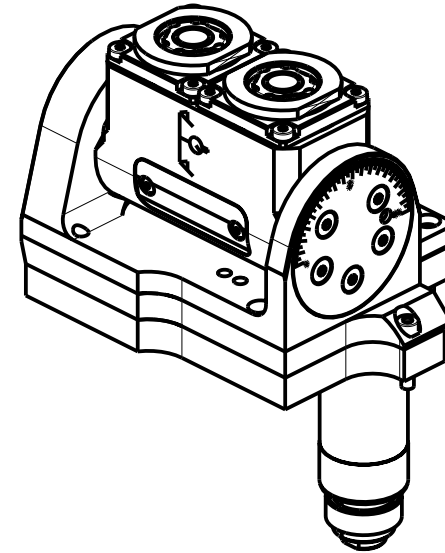
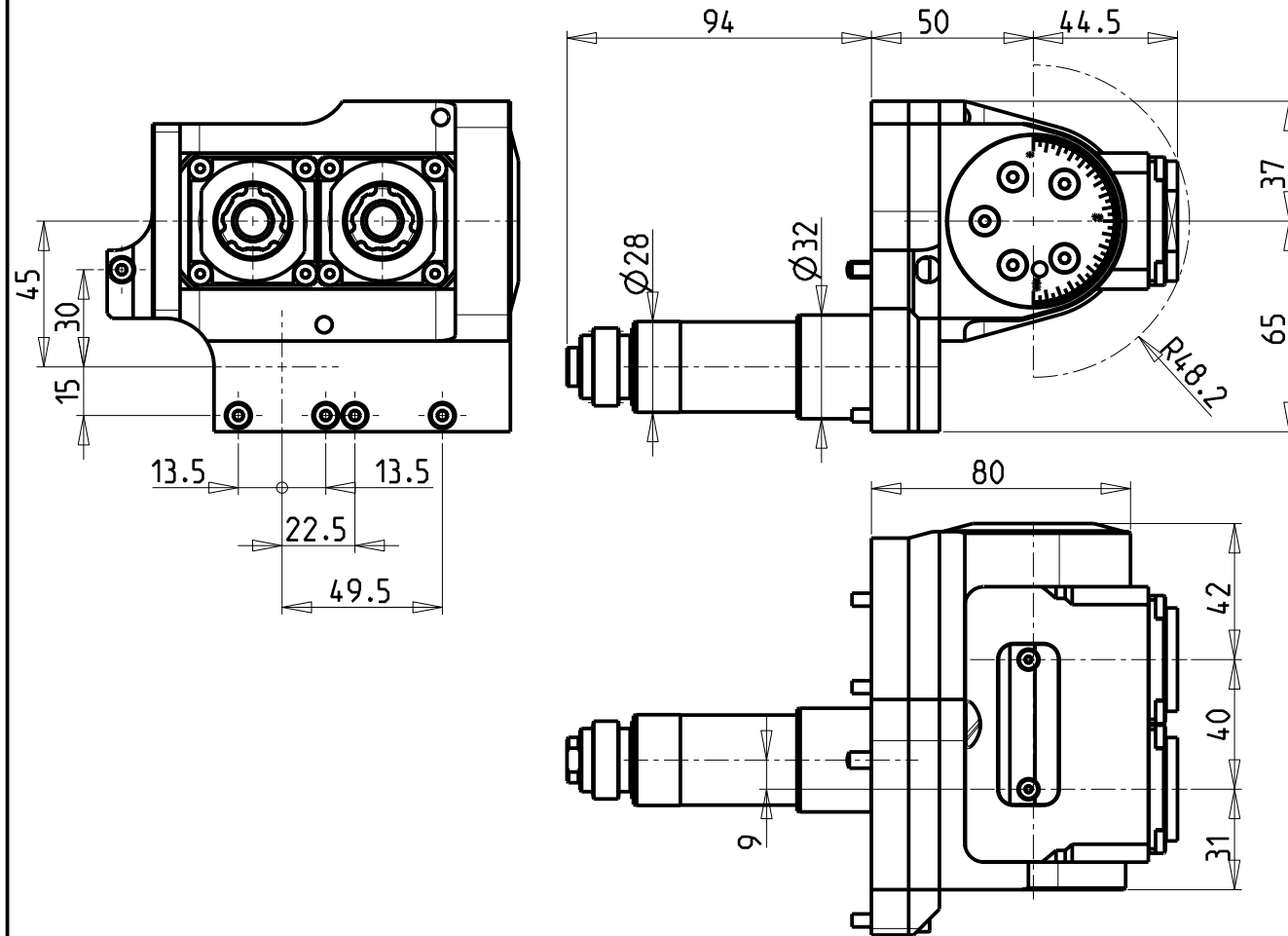
PRODUZIONE MODULI ROTANTI



PAGINA NOM335-1-00

ATTENZIONE - ATTENTION - ACHTUNG

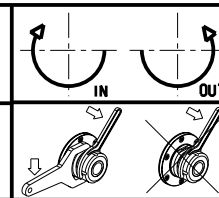
- Per lo smontaggio degli utensili utilizzare sempre la chiave di contrasto come indicato nel manuale d'uso.
- For disassembly of the tools use always the contrast key as mentioned in the user instructions.
- Fuer das Abmontieren der Werkzeuge immer den Gegenschlüssel benutzen wie in der Bedienungsanleitung erwaeht.




T16

Cod. MT	Mandrino Spindle Spindel	I	RPM	Lubrificazione est. Ext. coolant Aussenkuehlung	CHIAVI INCLUSE Keys included Schlüssel inbegriffen		
SPC0951000	ERA16	1:1	6000	X	CHUB32	CHUB19_SP3	CHTAER16ZC

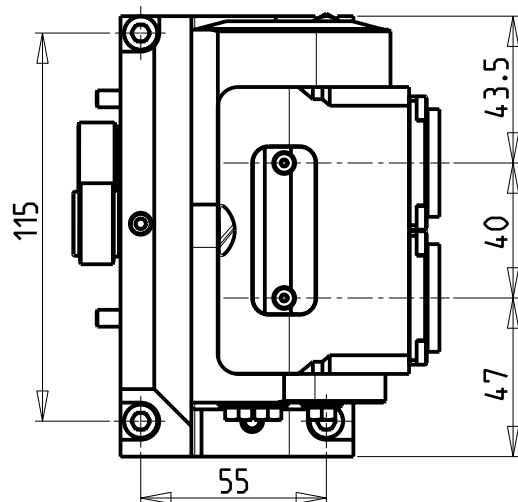
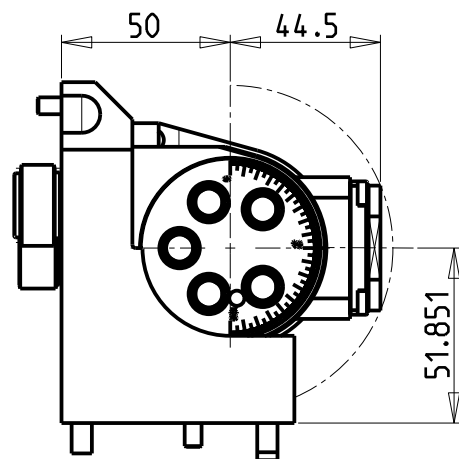
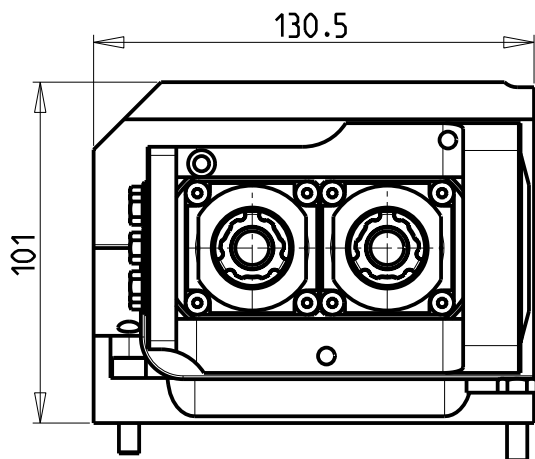
NOMURA
MOD: NN20J - NN20J2 - NN20JS
MODULO MOTORIZZATO ORIENTABILE DOPPIO ±90°
±90° double adjustable angle driven tool
Doppel-Angetriebenes Werkzeug schwenkbar ±90°



M.T. srl
 Via Casino Albini 480
 Tel. 0541/956034-957884
 Fax 0541/956341
 47842 S. GIOVANNI IN M. (RN)
 e-mail: mtma@mtmarchetti.com
 http://www.mtmarchetti.com

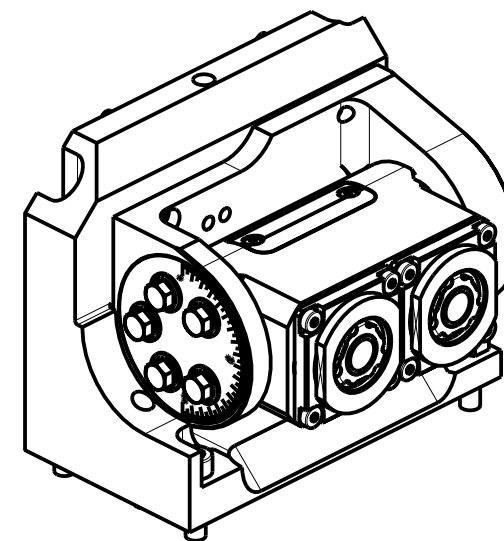
PRODUZIONE MODULI ROTANTI

 PAGINA NOM338-1-00

Subject to change without notice.



ATTENZIONE - ATTENTION - ACHTUNG

- Per lo smontaggio degli utensili utilizzare sempre la chiave di contrasto come indicato nel manuale d'uso.
- For disassembly of the tools use always the contrast key as mentioned in the user instructions.
- Fuer das Abmontieren der Werkzeuge immer den Gegenschlüssel benutzen wie in der Bedienungsanleitung erwaeht.

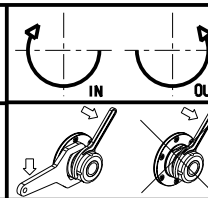


Cod. MT	Mandrino Spindle Spindel	I	RPM	Lubrificazione est. Ext. coolant Aussenkuehlung	CHIAVI INCLUSE Keys included Schlüssel inbegriffen			
NMR0020216	ERA16	1:1	6000	X	CHUB32	CHUB19_SP3	CHTAER16ZC	CH_POLIG_08

NOMURA
MOD: NN20J - NN20J2 - NN20JS

MODULO MOTORIZZATO ORIENTABILE DOPPIO ±90° PER CONTROMANDRINO
±90° double adjustable angle driven tool for subspindle
Doppel-Angetriebenes Werkzeug schwenkbar ±90° fuer Gegenspindel

Subject to change without notice.

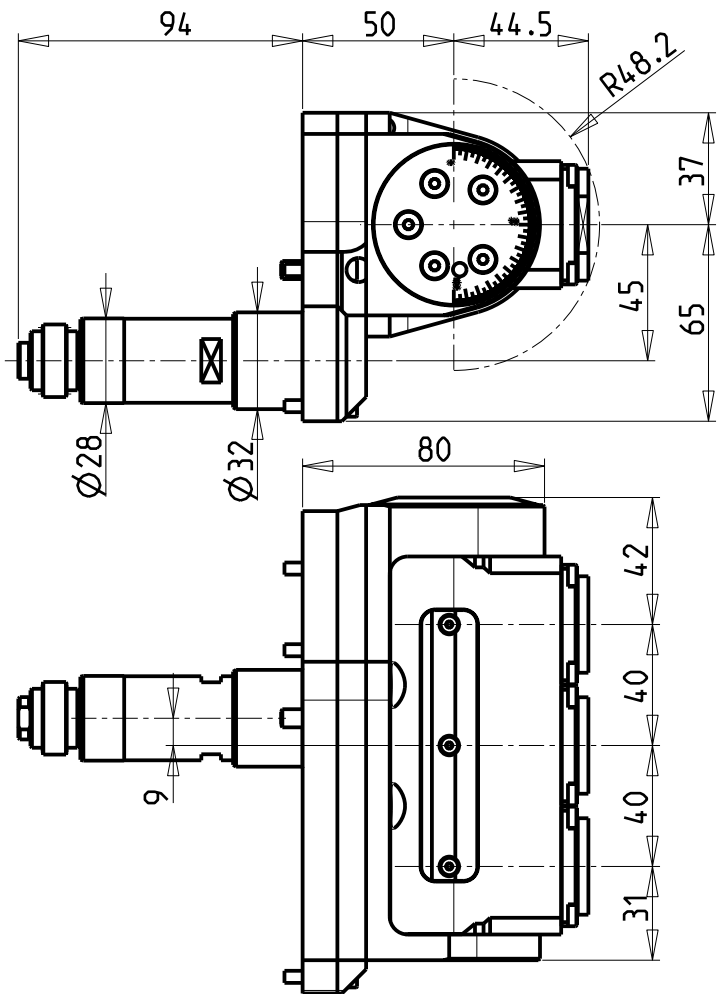
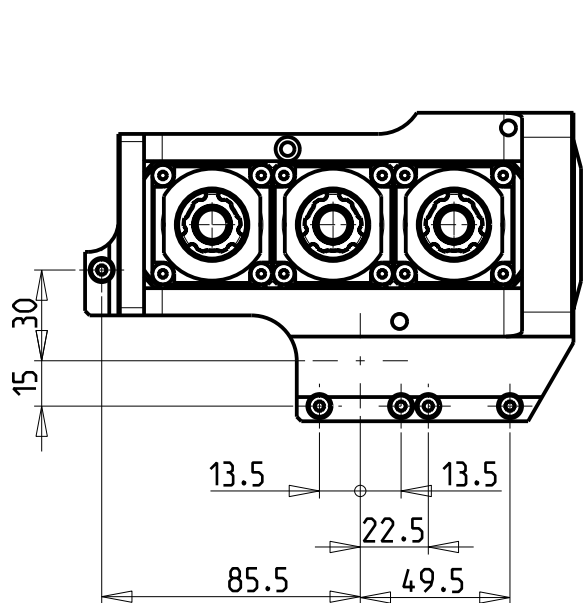


M.T. srl
Via Casino Albini 480
Tel. 0541/956034-957884
Fax 0541/956341
47842 S. GIOVANNI IN M. (RN)
e-mail: mtma@mtmarchetti.com
http://www.mtmarchetti.com

PRODUZIONE MODULI ROTANTI

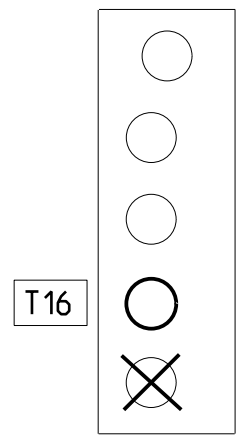
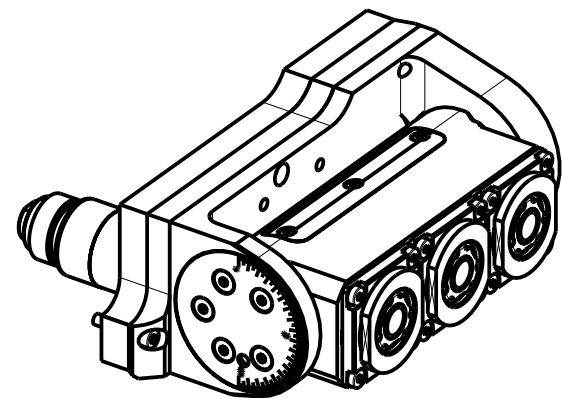


PAGINA NOM338-1-10



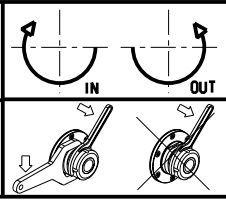
ATTENZIONE - ATTENTION - ACHTUNG

- Per lo smontaggio degli utensili utilizzare sempre la chiave di contrasto come indicato nel manuale d'uso.
- For disassembly of the tools use always the contrast key as mentioned in the user instructions.
- Fuer das Abmontieren der Werkzeuge immer den Gegenschlüssel benutzen wie in der Bedienungsanleitung erwaeht.




Cod. MT	Mandrino Spindle Spindel	I	RPM	Lubrificazione est. Ext. coolant Aussenkuehlung	CHIAVI INCLUSE Keys included Schluesssel inbegriffen		
NMR0040316	ERA16	1:1	6000	X	NMR0040012	CHUB19_SP3	CHTAER16ZC

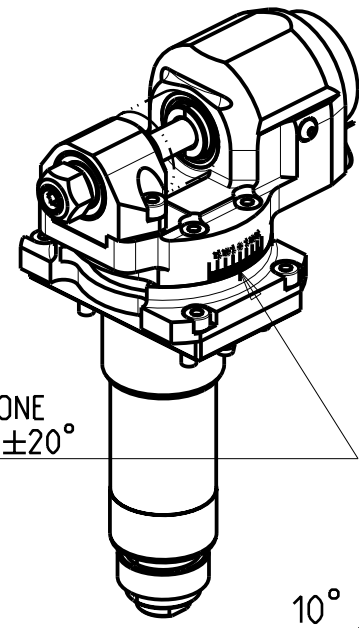
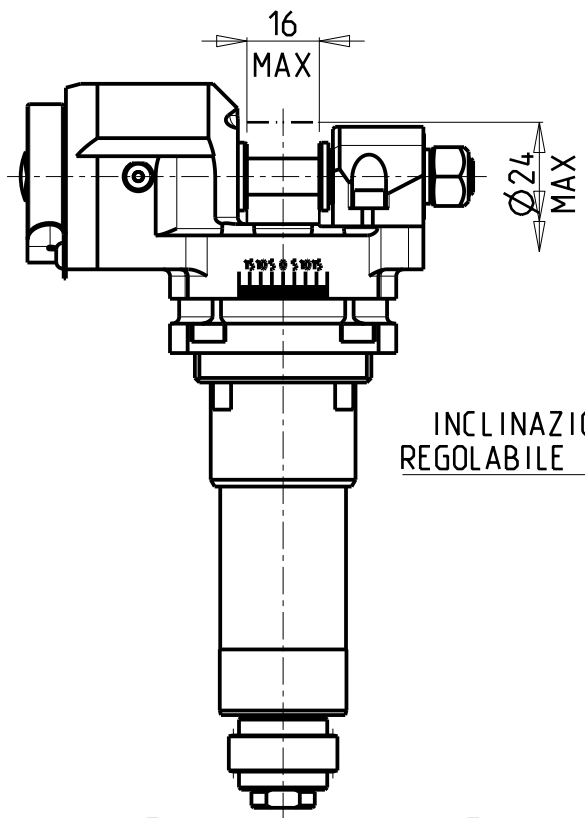
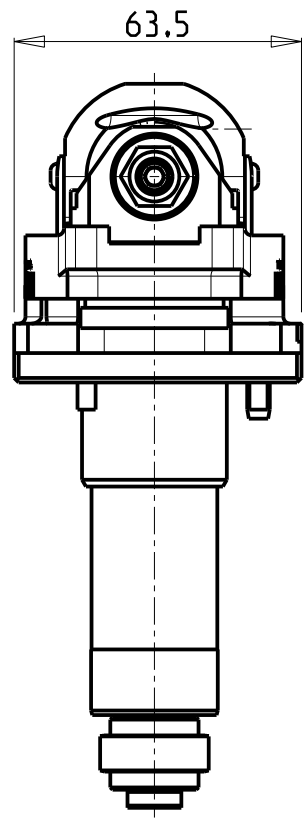
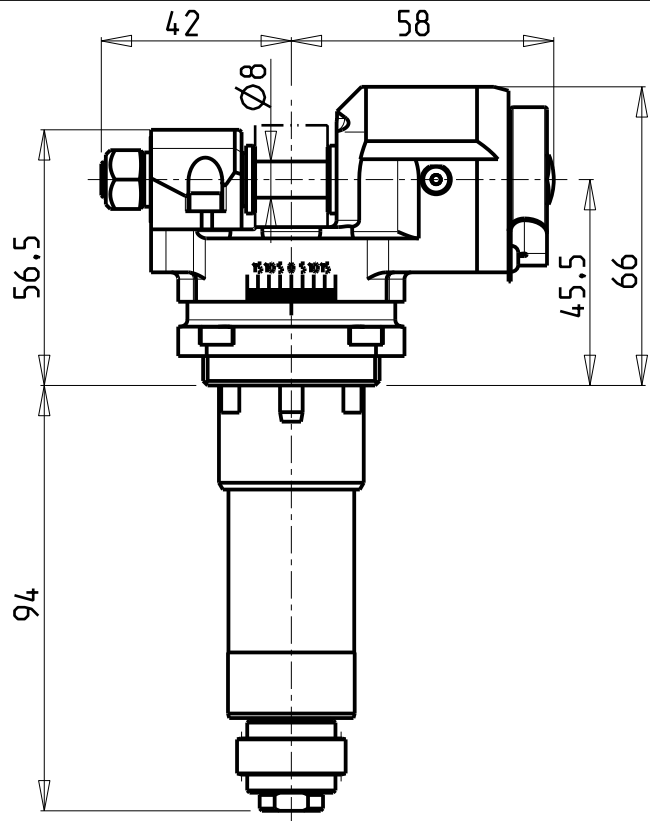
NOMURA
MOD: NN20J - NN20J2 - NN20JS
 MODULO MOTORIZZATO ORIENTABILE TRIPLO ±90°
 ±90° triple adjustable angle driven tool
 Dreifach-Angetriebenes Werkzeug schwenkbar ±90°



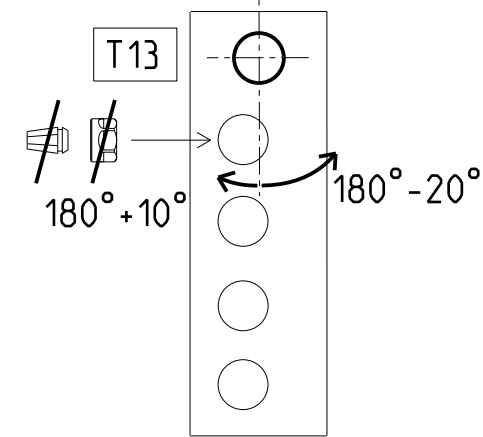
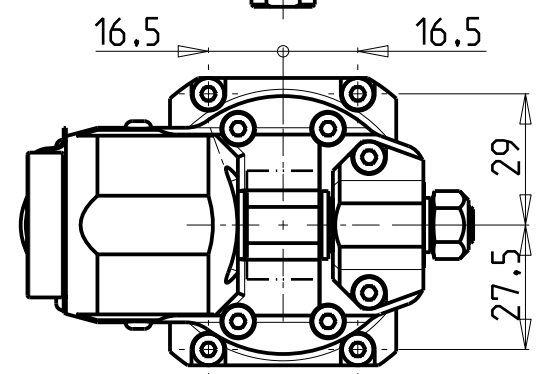
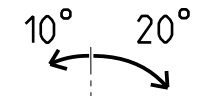
M.T. srl
 Via Casino Albini 480
 Tel. 0541/956034-957884
 Fax 0541/956341
 47842 S. GIOVANNI IN M. (RN)
 e-mail: mtma@mtmarchetti.com
 http://www.mtmarchetti.com

PRODUZIONE MODULI ROTANTI

 PAGINA NOM338-1-20

Subject to change without notice.



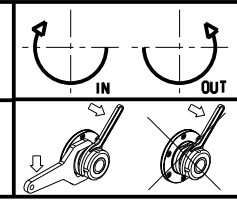
INCLINAZIONE
REGOLABILE $\pm 20^\circ$



Cod. MT	I	RPM max	Lubrificazione est. Ext. coolant Aussenkuehlung	CHIAVI INCLUDE Keys included Schluessel inbegriffen
SPC0971000	1:1	6000	X	CHESL04 CHUB13


NOMURA
MOD: NN20J - NN20J2 - NN20JS
MODULO MOTORIZZATO PORTACREATORE
Driven gear hobber
Angetriebenes Zahnradwaeltzraes-Werkzeug

Subject to change without notice.

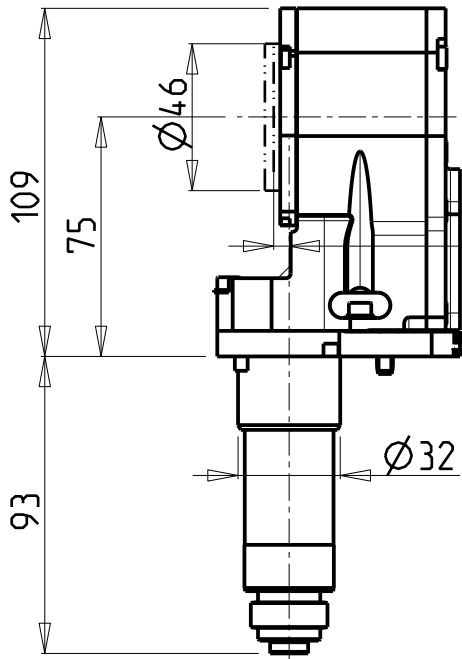
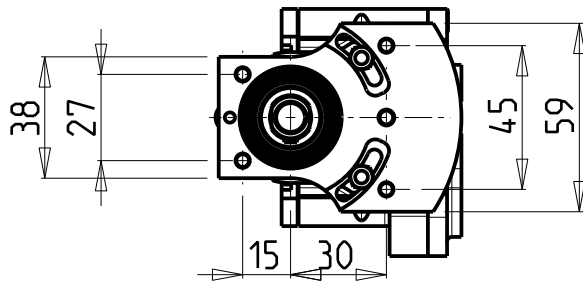


M.T. srl
Via Casino Albini 480
Tel. 0541/956034-957884
Fax 0541/956341
47842 S. GIOVANNI IN M. (RN)
e-mail: mtma@mtmarchetti.com
http://www.mtmarchetti.com

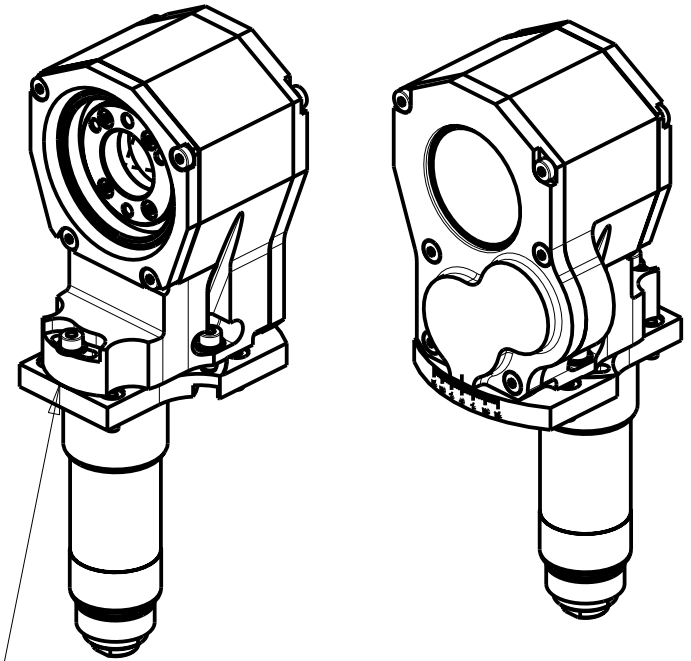
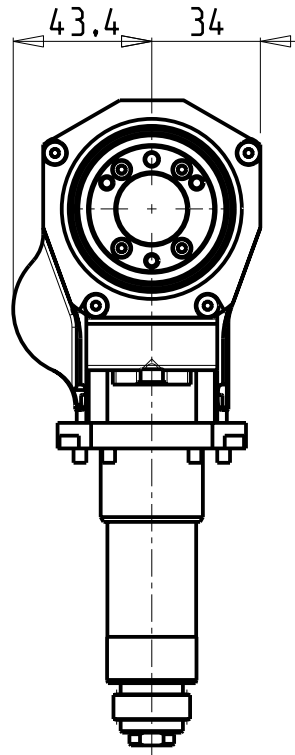
PRODUZIONE MODULI ROTANTI



PAGINA NOM340-1-00



4
Piano Inserti
Inserts Surface
Einsätze Fläche

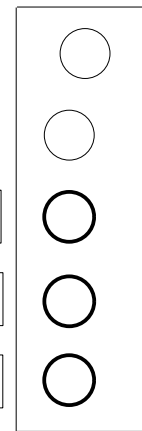


INCLINAZIONE
REGOLABILE ±15°

T15

T16

T17

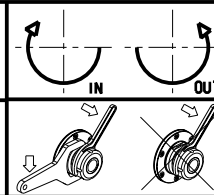


Cod. MT	I	RPM	Lubrificazione est. Ext. coolant Aussenkuehlung
NMR0010112	2:1	3000	X

Fresa non inclusa:
Milling-cutter not included:
Fraese nicht inbegriffen:

SANDVIK Coromill 325 cod. 325-12AP40-16M

NOMURA
MOD: NN20J - NN20J2 - NN20JS
MODULO MOTORIZZATO TURBINATORE RIDOTTO I=2:1
Driven whirling tool geared-down I=2:1
Gewindewirbeleinrichtung untersetzt I=2:1



M.T. srl
Via Casino Albini 480
Tel. 0541/956034-957884
Fax 0541/956341
47842 S. GIOVANNI IN M. (RN)
e-mail: mtma@mtmarchetti.com
http://www.mtmarchetti.com

PRODUZIONE MODULI ROTANTI



PAGINA NOM370-1-00

Subject to change without notice.

10/2018