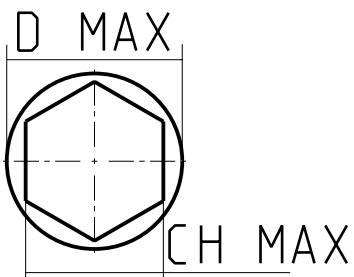


INSERTO TPGN220408  
 INSERT TPGN220408  
 EINLAGE TPGN220408



D MAX = 60  
 CH MAX = 52

Cod. MT	N°Utensili N°Tools N°Werkzeuge
P01Z30A100	3

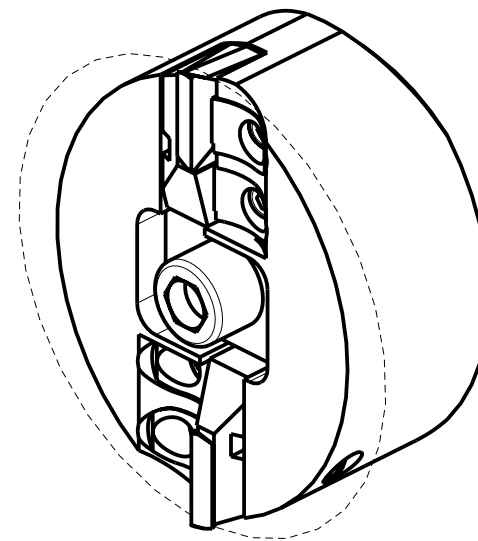
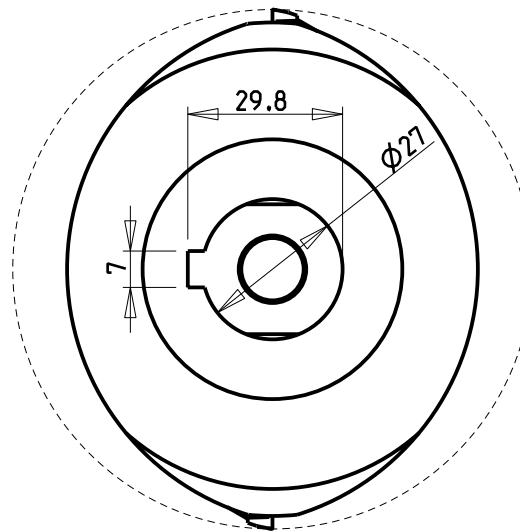
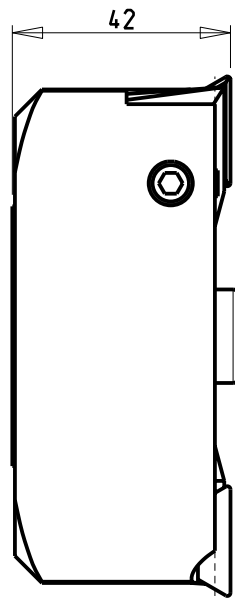
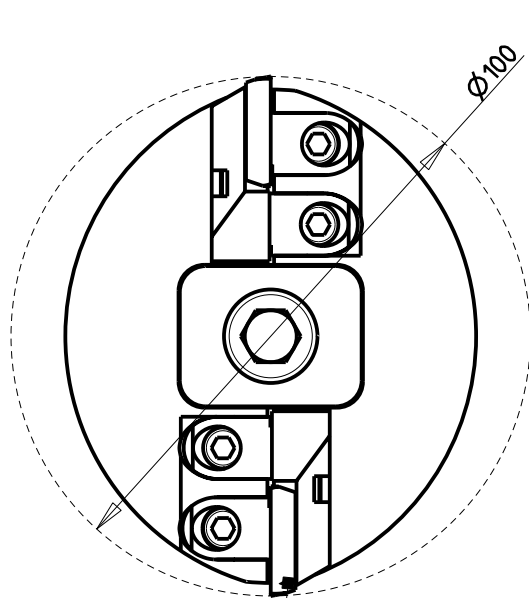
FRESE PER POLIGONATURA ESTERNA (3 INSERTI)  
 External polygon-making mill heads (3 inserts)  
 Fraese fuer externe Facettierung (3 Einlagen)

**M.T. srl**  
 Via Casino Albini 480  
 Tel. 0541/956034-957884  
 Fax 0541/956341  
 47842 S. GIOVANNI IN M. (RN)  
 e-mail: mtma@mtmarchetti.com  
<http://www.mtmarchetti.com>

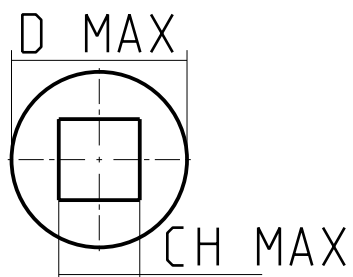
PRODUZIONE MODULI ROTANTI



PAGINA ACS050-1-00



INSERTO TPGN220408  
 INSERT TPGN220408  
 EINLAGE TPGN220408



D MAX = 42mm  
 CH MAX = 30mm

Cod. MT	N°Utensili N° Tools N° Werkzeuge
P01Z20A100	2

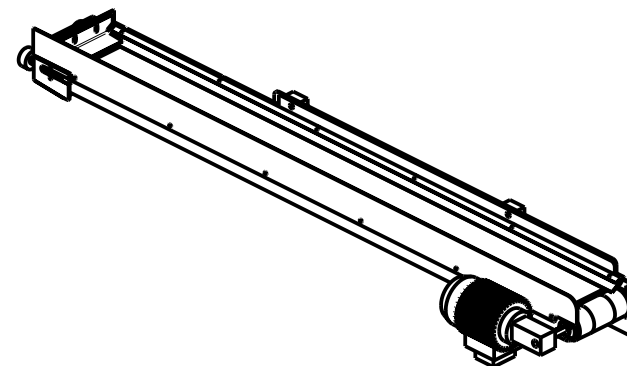
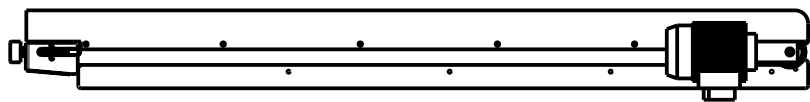
FRESE PER POLIGONATURA ESTERNA (2 INSERTI)  
 External polygon-making mill heads (2 inserts)  
 Fraese fuer externe Facettierung (2 Einlagen)

**M.T. srl**  
 Via Casino Albini 480  
 Tel. 0541/956034-957884  
 Fax 0541/956341  
 47842 S. GIOVANNI IN M. (RN)  
 e-mail: mtma@mtmarchetti.com  
 http://www.mtmarchetti.com

PRODUZIONE MODULI ROTANTI



PAGINA ACS055-1-00



Cod. MT	Macchina Machine
MNL0321772	MORI SEIKI NL2000/2500
MNL0321773	MORI SEIKI NLX2500 SY
MNL0321774	MORI SEIKI NLX2500 MC
MNL0321775	MORI SEIKI NLX2000 SY
MNL0321776	MORI SEIKI NLX2500 SY / 700 CELOS
MNL0321777	MORI SEIKI NLX1500Y CELOS
OKU1181750	OKUMA LB3000

**Lamiere in acciaio inox, fornito di cavo, teleruttore, termica. Pronto per il collegamento, rapporto 1:100**

In inox steel plate supplied with cable, remote control switch and thermic switch. Ready for connection, ratio 1:100

Inox Stahl Blech ausgestattet mit Kabel, Termal Feinschalter. Bereit für Anschluss, Ratio 1:100

## ACCESSORI

NASTRO TRASPORTATORE SCARICO PEZZI  
Part unloader conveyor belt  
Transport-Förderband/Stuckablader

### M.T. srl

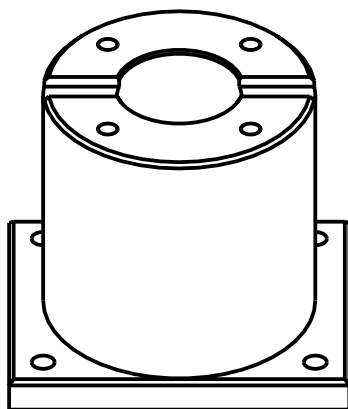
Via Casino Albini 480  
Tel. 0541/956034-957884  
Fax 0541/956341  
47842 S. GIOVANNI IN M. (RN)  
e-mail: mtma@mtmarchetti.com  
<http://www.mtmarchetti.com>

PRODUZIONE MODULI ROTANTI



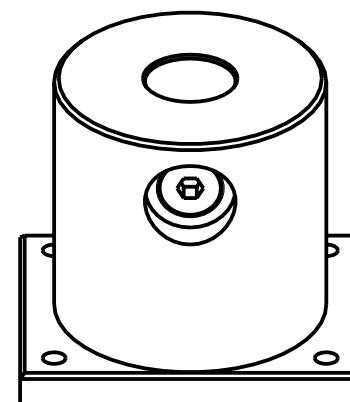
PAGINA ACS100-1-00

## SM BIGLIA



TIPO type	CODICE code
BIGLIA	SM55BIGL

## SM VDI



TIPO type	CODICE code
BARUFFALDI	SM40BAR
DIPLOMATIC	SM40DUP
OKUMA	SM40OKU
SAUTER	SM40SAU

### ACCESSORI

ATTREZZATURA SMONTAGGIO/MONTAGGIO UTENSILI  
Tool disassembling/assembling equipment  
Ausrüstung Demontage/Montage der Werkzeuge

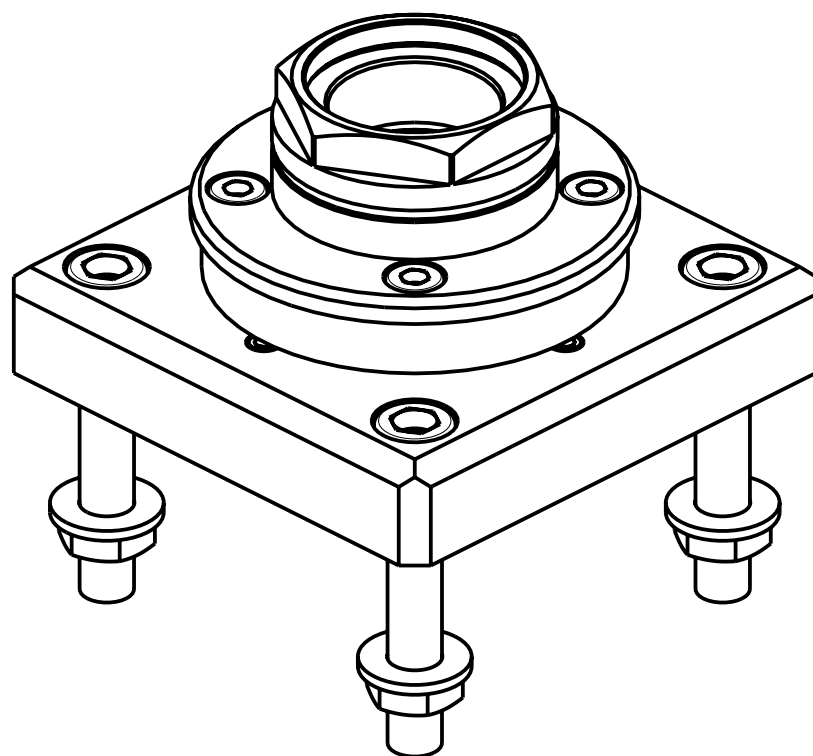
### M.T. srl

Via Casino Albini 480  
Tel. 0541/956034-957884  
Fax 0541/956341  
47842 S. GIOVANNI IN M. (RN)  
e-mail: [mtma@mtmarchetti.com](mailto:mtma@mtmarchetti.com)  
<http://www.mtmarchetti.com>

PRODUZIONE MODULI ROTANTI



PAGINA ACS150-1-00



Cod. MT	TAGLIA Size Masse
ATT_MTSK32	MTSK-32
ATT_MTSK40	MTSK-40
ATT_MTSK50	MTSK-50
ATT_MTSK63	MTSK-63

ACCESSORI

ATTREZZATURA SMONTAGGIO/MONTAGGIO UTENSILI MTSK  
Tool disassembling/assembling equipment for MTSK  
Ausrüstung Demontage/Montage der MTSK-Werkzeuge

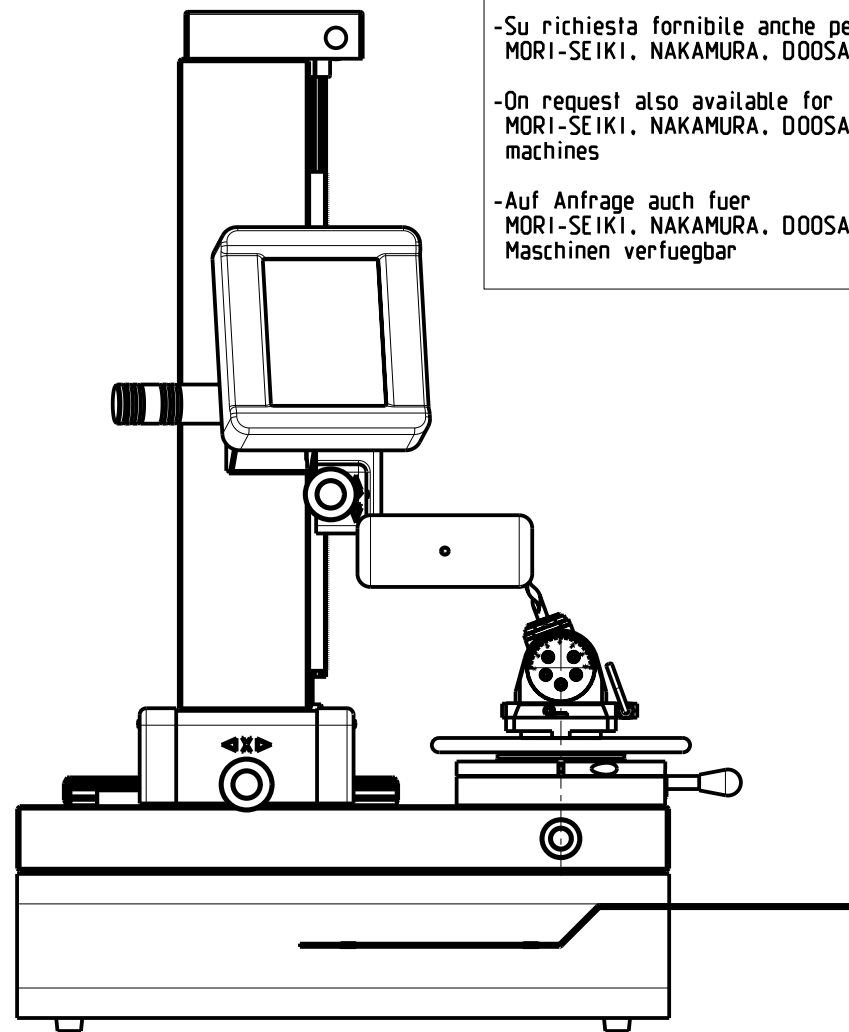
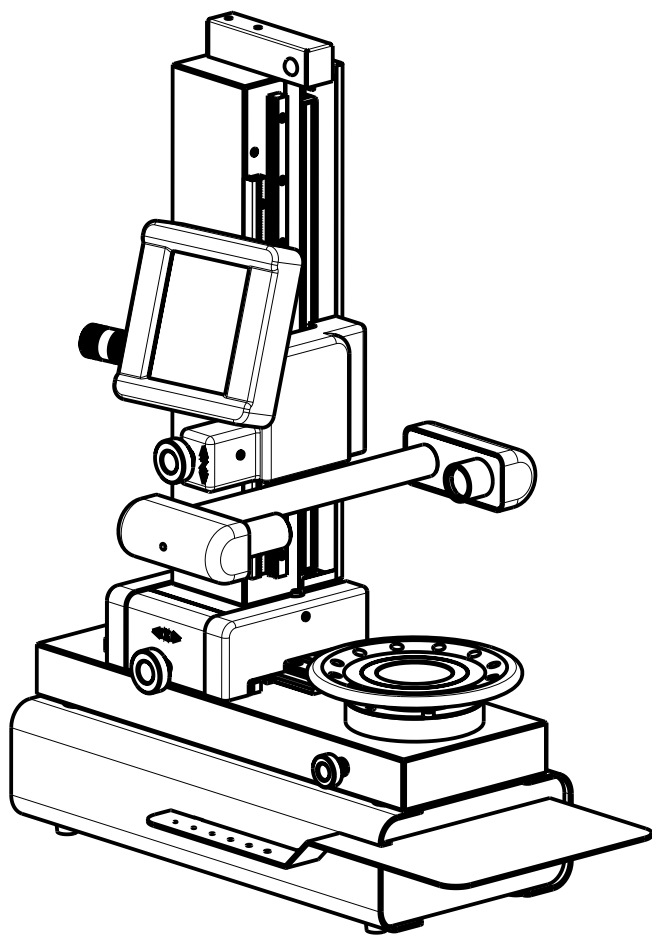
**M.T. srl**

Via Casino Albini 480  
Tel. 0541/956034-957884  
Fax 0541/956341  
47842 S. GIOVANNI IN M. (RN)  
e-mail: [mtma@mtmarchetti.com](mailto:mtma@mtmarchetti.com)  
<http://www.mtmarchetti.com>

PRODUZIONE MODULI ROTANTI



PAGINA ACS155-1-00



-Su richiesta fornibile anche per macchine  
MORI-SEIKI, NAKAMURA, DOOSAN, OKUMA, BIGLIA

-On request also available for  
MORI-SEIKI, NAKAMURA, DOOSAN, OKUMA, BIGLIA  
machines

-Auf Anfrage auch fuer  
MORI-SEIKI, NAKAMURA, DOOSAN, OKUMA, BIGLIA  
Maschinen verfuegbar

Cod. MT

MODELLI DI MACCHINE  
Machine models  
Maschinen Modelle

PRESET\_MNZ0100

MORI-SEIKI NZ

PRESET\_NKM0100

NAKAMURA SUPERMILL - CHIAH CHYUN CT2/CT3

## ACCESSORI

ATTREZZATURA PER PRESETTING DI MODULI MOTORIZZATI  
Driven tool presetting machine  
Presetting Maschine fuer angetriebene Werkzeuge

**M.T. srl**

Via Casino Albini 480  
Tel. 0541/956034-957884  
Fax 0541/956341  
47842 S. GIOVANNI IN M. (RN)  
e-mail: mtma@mtmarchetti.com  
<http://www.mtmarchetti.com>

PRODUZIONE MODULI ROTANTI



PAGINA ACS160-1-00