

MONOd'

I portautensili integrali **MONOd'** rappresentano la soluzione ideale per attrezzare ogni tipo di macchina utensile con attacco base HSK 63 e 100, DIN 69871 e MAS-BT 40 e 50, garantendo i vantaggi di elevata qualità e alto grado di precisione, con un prezzo di mercato altamente concorrenziale.



Il programma MONOd' include portapinze ER, Weldon, Portafrese, Riduzioni Morse e Maschiatori.

Tutti i portautensili sono equilibrati di progetto, G 6,3 a 8.000 giri/min. MONOd' ER G 6,3 a 15.000 giri/min.



 0.003

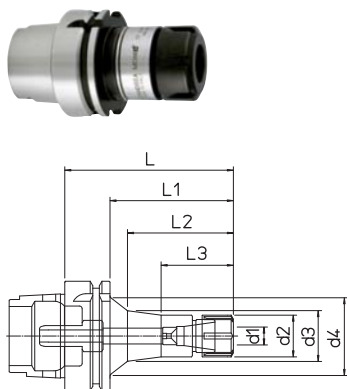
MAX. RPM 15.000

DIN 69893 HSK

DIN 69871

MAS 403 BT

DIN 69893 HSK-A PORTAPINZE - ER DIN 6499

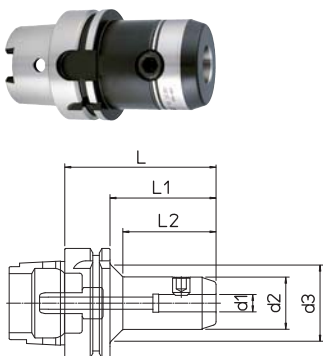


Completo di raccordo per il refrigerante

HSK-A	REF.	CODE	TYPE	d1	d2	d3	d4	L	L1	L2	L3	kg
63	HSK-A63 ER16.80	71HSKA063ER1608	ER 16 M	0.5 ~ 10	22	32		80	54	41		1.1
63	HSK-A63 ER16.120	71HSKA063ER1612	ER 16 M	0.5 ~ 10	22	31		120	94			1.9
63	HSK-A63 ER25.80	71HSKA063ER2508	ER 25	1 ~ 16	42			80	54			1.3
63	HSK-A63 ER25.140	71HSKA063ER2514	ER 25	1 ~ 16	42	47.5		140	114	46		1.7
63	HSK-A63 ER32.90	71HSKA063ER3209	ER 32	2 ~ 20	50			90	64			1.6
63	HSK-A63 ER32.160	71HSKA063ER3216	ER 32	2 ~ 20	50			160	134			2.2
100	HSK-A100 ER16.100	71HSKA100ER1610	ER 16 M	0.5 ~ 10	22	25	45	100	71	61	41.5	2.3
100	HSK-A100 ER16.160	71HSKA100ER1616	ER 16 M	0.5 ~ 10	22	34.5	44	160	131	126		2.5
100	HSK-A100 ER25.100	71HSKA100ER2510	ER 25	1 ~ 16	42	45.5		100	71	47		2.6
100	HSK-A100 ER25.160	71HSKA100ER2516	ER 25	1 ~ 16	42	49.5		160	131	47		3.2
100	HSK-A100 ER32.120	71HSKA100ER3212	ER 32	2 ~ 20	50	55		120	91	52		3.1
100	HSK-A100 ER32.160	71HSKA100ER3216	ER 32	2 ~ 20	50	56.5		160	131	52		3.7
100	HSK-A100 ER40.120	71HSKA100ER4012	ER 40	3 ~ 26	63	71.5		120	91	60		3.5

Pinze elastiche e chiavi di serraggio escluse

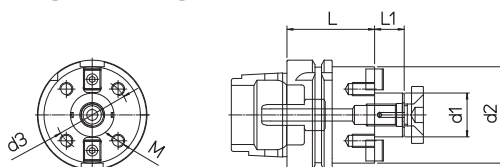
DIN 69893 HSK-A WELDON - WD DIN 1835-B



Completo di raccordo per il refrigerante

HSK-A	REF.	CODE	d1 ^{H5}	d2	d3	L	L1	L2	kg
63	HSK-A63 WD06.60	71HSKA063WD0606	6	23		60	34		0.8
63	HSK-A63 WD08.65	71HSKA063WD0806	8	26		65	39		0.9
63	HSK-A63 WD10.70	71HSKA063WD1007	10	30		70	44		1.1
63	HSK-A63 WD12.70	71HSKA063WD1207	12	34		70	44		1.2
63	HSK-A63 WD16.80	71HSKA063WD1608	16	42		80	54		1.4
63	HSK-A63 WD20.80	71HSKA063WD2008	20	50		80	54		1.5
63	HSK-A63 WD25.110	71HSKA063WD2511	25	63		110			2.3
63	HSK-A63 WD32.110	71HSKA063WD3211	32	70		110			2.5
100	HSK-A100 WD10.90	71HSKA100WD1009	10	30	45	90	61	53.5	2.3
100	HSK-A100 WD12.100	71HSKA100WD1210	12	34	45	100	71	65.5	2.4
100	HSK-A100 WD16.100	71HSKA100WD1610	16	42		100	71		2.6
100	HSK-A100 WD20.110	71HSKA100WD2011	20	50		110	81		3.1
100	HSK-A100 WD25.120	71HSKA100WD2512	25	63		120	91		3.9
100	HSK-A100 WD32.120	71HSKA100WD3212	32	70		120	91		4.3
100	HSK-A100 WD40.120	71HSKA100WD4012	40	80		120	91		4.8

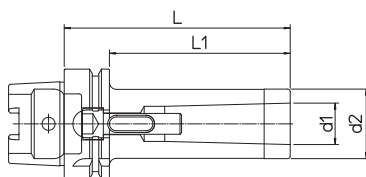
DIN 69893 HSK-A PORTAFRESE - PF



Completo di raccordo per il refrigerante

HSK-A	REF.	CODE	d1	d2	d3	M	L	L1	kg
63	HSK-A63 PF16.50	71HSKA063PF1605	16	32			50	17	1.1
63	HSK-A63 PF22.50	71HSKA063PF2205	22	40			50	19	1.2
63	HSK-A63 PF27.55	71HSKA063PF2705	27	50			55	21	1.4
63	HSK-A63 PF32.60	71HSKA063PF3206	32	60			60	24	1.8
100	HSK-A100 PF22.65	71HSKA100PF2265	22	40			65	19	2.3
100	HSK-A100 PF27.65	71HSKA100PF2765	27	50			65	21	2.5
100	HSK-A100 PF32.70	71HSKA100PF3270	32	60			70	24	2.9
100	HSK-A100 PF40.70	71HSKA100PF4070	40	88	66.7	M12	70	27	3.3
100	HSK-A100 PF60.75	71HSKA100PF6075	60	128.5	101.6	M16	75	40	4.2

DIN 69893 HSK-A MORSE - CM DIN 228 AB



HSK-A	REF.	CODE	MORSE	d1	d2	L	L1	kg
63	HSK-A63 CM2.110 A-B	71HSKA063CMB211	2	17.780	32	110	84	2
63	HSK-A63 CM3.130 A-B	71HSKA063CMB313	3	23.825	40	130	104	2.2
63	HSK-A63 CM4.155 A-B	71HSKA063CMB415	4	31.267	48	155	129	2.6

DIN 69871 AD PORTAPINZE - ER DIN 6499

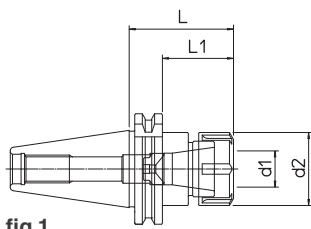


fig.1

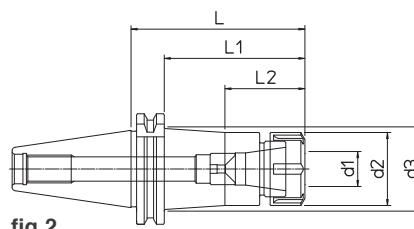


fig.2

Pinze elastiche e chiavi di serraggio escluse

DIN	REF.	CODE	TYPE	d1	d2	d3	L	L1	L2	kg	fig.
40	DIN69871-AD40 ER16.60	71DIN-A40ER1606	ER 16 M	0.5 ~ 10	22		60	41		0.9	1
40	DIN69871-AD40 ER16.100	71DIN-A40ER1610	ER 16 M	0.5 ~ 10	22	29.5	100	81	41	1	2
40	DIN69871-AD40 ER16.160	71DIN-A40ER1616	ER 16 M	0.5 ~ 10	22	38	160	141	41	2	2
40	DIN69871-AD40 ER25.60	71DIN-A40ER2506	ER 25	1 ~ 16	42		60	41		1.1	1
40	DIN69871-AD40 ER25.100	71DIN-A40ER2510	ER 25	1 ~ 16	42	47	100	81	46	1.6	2
40	DIN69871-AD40 ER25.160	71DIN-A40ER2516	ER 25	1 ~ 16	42	50	160	141	46	2.1	2
40	DIN69871-AD40 ER32.70	71DIN-A40ER3207	ER 32	2 ~ 20	50		70	51		1.2	1
40	DIN69871-AD40 ER32.110	71DIN-A40ER3211	ER 32	2 ~ 20	50		110	91		1.7	1
40	DIN69871-AD40 ER32.160	71DIN-A40ER3216	ER 32	2 ~ 20	50		160	141		2.7	1
40	DIN69871-AD40 ER40.80	71DIN-A40ER4008	ER 40	3 ~ 26	63		80	61		1.3	1
40	DIN69871-AD40 ER40.120	71DIN-A40ER4012	ER 40	3 ~ 26	63		120	101		2.3	1
50	DIN69871-AD50 ER16.100	71DIN-A50ER1610	ER 16 M	0.5 ~ 10	22	29.5	100	81	41	2.5	2
50	DIN69871-AD50 ER16.160	71DIN-A50ER1616	ER 16 M	0.5 ~ 10	22	32.5	160	141	41	3.3	2
50	DIN69871-AD50 ER25.110	71DIN-A50ER2511	ER 25	1 ~ 16	42	48	110	91	46	2.8	2
50	DIN69871-AD50 ER25.160	71DIN-A50ER2516	ER 25	1 ~ 16	42	50	160	141	46	3.6	2
50	DIN69871-AD50 ER32.70	71DIN-A50ER3207	ER 32	2 ~ 20	50		70	51		2.9	1
50	DIN69871-AD50 ER32.110	71DIN-A50ER3211	ER 32	2 ~ 20	50	55	110	91	52	3.4	2
50	DIN69871-AD50 ER32.160	71DIN-A50ER3216	ER 32	2 ~ 20	50	57.5	160	141	52	4	2
50	DIN69871-AD50 ER40.100	71DIN-A50ER4010	ER 40	3 ~ 26	63	65	100	81	55	3.8	2
50	DIN69871-AD50 ER40.160	71DIN-A50ER4016	ER 40	3 ~ 26	63	70	160	141	55	4.3	2

DIN 69871 AD PORTAFRESE - PF

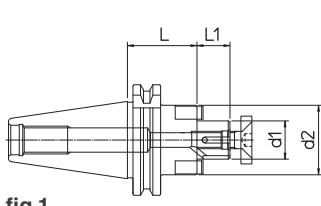


fig.1

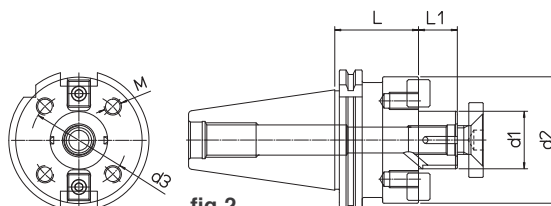


fig.2

DIN	REF.	CODE	d1	d2	d3	M	L	L1	kg	fig.
40	DIN69871-AD40 PF16.35	71DIN-A40PF1603	16	32			35	17	0.9	1
40	DIN69871-AD40 PF22.40	71DIN-A40PF2204	22	40			40	19	1	1
40	DIN69871-AD40 PF27.45	71DIN-A40PF2704	27	50			45	21	1.2	1
40	DIN69871-AD40 PF32.50	71DIN-A40PF3205	32	60			50	24	1.7	1
40	DIN69871-AD40 PF40.55	71DIN-A40PF4005	40	70			55	27	2.1	1
50	DIN69871-AD50 PF16.40	71DIN-A50PF1604	16	32			40	17	2.4	1
50	DIN69871-AD50 PF16.110	71DIN-A50PF1611	16	32			110	17	2.8	1
50	DIN69871-AD50 PF22.45	71DIN-A50PF2204	22	40			45	19	2.6	1
50	DIN69871-AD50 PF27.50	71DIN-A50PF2705	27	50			50	21	2.7	1
50	DIN69871-AD50 PF32.55	71DIN-A50PF3205	32	60			55	24	3.2	1
50	DIN69871-AD50 PF40.60	71DIN-A50PF4006	40	88	66.7	M12	60	27	4.3	2
50	DIN69871-AD50 PF60.70	71DIN-A50PF6007	60	128.5	101.6	M16	70	40	6.6	2

PF.. /40-60 BPS p.57

DIN 69871 AD WELDON - WD DIN 1835-B

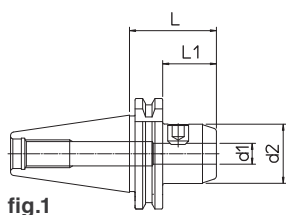


fig.1

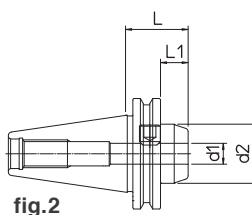


fig.2

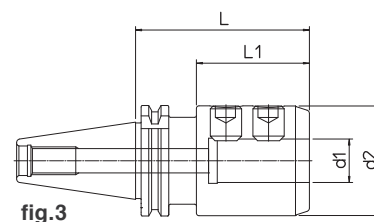
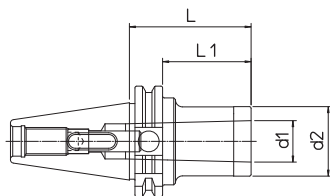


fig.3

DIN	REF.	CODICE	d1 ^{H5}	d2	L	L1	kg	fig.
40	DIN69871-AD40 WD06.50	71DIN-A40WD0605	6	23	50	31	0.8	1
40	DIN69871-AD40 WD08.50	71DIN-A40WD0805	8	26	50	31	0.9	1
40	DIN69871-AD40 WD10.50	71DIN-A40WD1005	10	30	50	31	1	1
40	DIN69871-AD40 WD12.35	71DIN-A40WD1203	12	34	35	16	1	2
40	DIN69871-AD40 WD12.110	71DIN-A40WD1211	12	34	110	91	1.4	1
40	DIN69871-AD40 WD16.35	71DIN-A40WD1603	16	42	35	16	1.1	2
40	DIN69871-AD40 WD16.110	71DIN-A40WD1611	16	42	110	91	1.7	1
40	DIN69871-AD40 WD16.160	71DIN-A40WD1616	16	42	160	141	2.2	1
40	DIN69871-AD40 WD20.35	71DIN-A40WD2003	20	44	35	16	1.2	2
40	DIN69871-AD40 WD20.110	71DIN-A40WD2011	20	50	110	91	2.1	1
40	DIN69871-AD40 WD20.160	71DIN-A40WD2016	20	50	160	141	2.6	1
40	DIN69871-AD40 WD25.35	71DIN-A40WD2503	25	44	35	16	1.3	2
40	DIN69871-AD40 WD25.100	71DIN-A40WD2510	25	63	100	65	2	3
40	DIN69871-AD40 WD25.160	71DIN-A40WD2516	25	63	160	125	3.2	3
40	DIN69871-AD40 WD32.100	71DIN-A40WD3210	32	70	100	65	2.5	3
40	DIN69871-AD40 WD32.160	71DIN-A40WD3216	32	70	160	125	3.9	3
50	DIN69871-AD50 WD10.63	71DIN-A50WD1006	10	30	63	44	2.5	1
50	DIN69871-AD50 WD10.160	71DIN-A50WD1016	10	30	160	141	2.9	1
50	DIN69871-AD50 WD12.63	71DIN-A50WD1206	12	34	63	44	2.6	1
50	DIN69871-AD50 WD12.160	71DIN-A50WD1216	12	34	160	141	3.2	1
50	DIN69871-AD50 WD16.110	71DIN-A50WD1611	16	42	110	91	3.2	1
50	DIN69871-AD50 WD16.160	71DIN-A50WD1616	16	42	160	141	3.7	1
50	DIN69871-AD50 WD20.110	71DIN-A50WD2011	20	50	110	91	3.6	1
50	DIN69871-AD50 WD20.160	71DIN-A50WD2016	20	50	160	141	4.2	1
50	DIN69871-AD50 WD25.80	71DIN-A50WD2508	25	63	80	61	3.5	1
50	DIN69871-AD50 WD25.110	71DIN-A50WD2511	25	63	110	91	4.1	2
50	DIN69871-AD50 WD25.160	71DIN-A50WD2516	25	63	160	141	5.1	2
50	DIN69871-AD50 WD32.100	71DIN-A50WD3210	32	70	100	81	4.6	2
50	DIN69871-AD50 WD32.160	71DIN-A50WD3216	32	70	160	141	6	2
50	DIN69871-AD50 WD40.100	71DIN-A50WD4010	40	80	100	81	4.8	2

DIN 69871 A MORSE - CM DIN 228 AB



DIN	REF.	-CODE	MORSE	d1	d2	L	L1	kg
40	DIN69871-A40 CM2.50 A-B	71DIN-40-CMB205	2	17.780	32	50	31	1
40	DIN69871-A40 CM3.70 A-B	71DIN-40-CMB307	3	23.825	40	70	51	1.1
50	DIN69871-A50 CM2.60 A-B	71DIN-50-CMB206	2	17.780	32	60	41	2.6
50	DIN69871-A50 CM3.60 A-B	71DIN-50-CMB306	3	23.825	40	60	41	2.7
50	DIN69871-A50 CM4.80 A-B	71DIN-50-CMB408	4	31.267	48	80	61	2.9

MAS 403 BT40 AD PORTAPINZE - ER DIN 6499

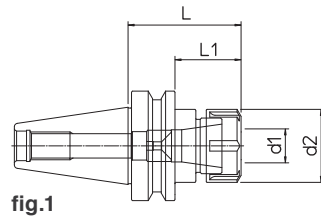


fig.1

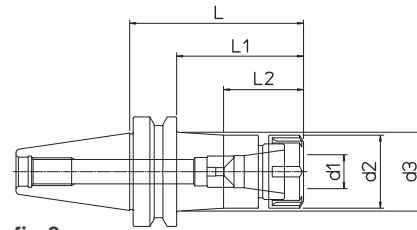


fig.2

Pinze elastiche e chiavi di serraggio escluse

BT	REF.	CODE	TYPE	d1	d2	d3	L	L1	L2	kg	fig.
40	MAS403 BT40-AD ER16.60	71MBT-A40ER1606	ER 16 M	0.5 ~ 10	22		60	33		1	1
40	MAS403 BT40-AD ER16.100	71MBT-A40ER1610	ER 16 M	0.5 ~ 10	22	28	100	73	41	1.1	2
40	MAS403 BT40-AD ER16.160	71MBT-A40ER1616	ER 16 M	0.5 ~ 10	22	36.5	160	133	41	2.1	2
40	MAS403 BT40-AD ER25.65	71MBT-A40ER2506	ER 25	1 ~ 16	42		65	38		1.2	1
40	MAS403 BT40-AD ER25.100	71MBT-A40ER2510	ER 25	1 ~ 16	42	45.5	100	73	46	1.7	2
40	MAS403 BT40-AD ER25.160	71MBT-A40ER2516	ER 25	1 ~ 16	42	49.5	160	133	46	2.2	2
40	MAS403 BT40-AD ER32.70	71MBT-A40ER3207	ER 32	2 ~ 20	50		70	43		1.3	1
40	MAS403 BT40-AD ER32.110	71MBT-A40ER3211	ER 32	2 ~ 20	50		110	83		1.8	1
40	MAS403 BT40-AD ER32.160	71MBT-A40ER3216	ER 32	2 ~ 20	50		160	133		2.8	1
40	MAS403 BT40-AD ER40.80	71MBT-A40ER4008	ER 40	3 ~ 26	63		80	53		1.4	1
40	MAS403 BT40-AD ER40.120	71MBT-A40ER4012	ER 40	3 ~ 26	63		120	93		2.4	1
50	MAS403 BT50-AD ER16.100	71MBT-A50ER1610	ER 16 M	0.5 ~ 10	22	26.5	100	62	41	3.6	2
50	MAS403 BT50-AD ER16.160	71MBT-A50ER1616	ER 16 M	0.5 ~ 10	22	31	160	122	41	4.3	2
50	MAS403 BT50-AD ER25.110	71MBT-A50ER2511	ER 25	1 ~ 16	42	45.5	110	72	46	3.8	2
50	MAS403 BT50-AD ER25.160	71MBT-A50ER2516	ER 25	1 ~ 16	42	48.5	160	122	46	4.6	2
50	MAS403 BT50-AD ER32.80	71MBT-A50ER3208	ER 32	2 ~ 20	50		80	42		3.9	1
50	MAS403 BT50-AD ER32.110	71MBT-A50ER3211	ER 32	2 ~ 20	50	52.5	110	72	52	4.4	2
50	MAS403 BT50-AD ER32.160	71MBT-A50ER3216	ER 32	2 ~ 20	50	56	160	122	52	5	2
50	MAS403 BT50-AD ER40.100	71MBT-A50ER4010	ER 40	3 ~ 26	63		100	62		4.8	1
50	MAS403 BT50-AD ER40.160	71MBT-A50ER4016	ER 40	3 ~ 26	63	68.5	160	122	55	5.3	2

MAS 403 BT40 AD PORTAFRESE - PF

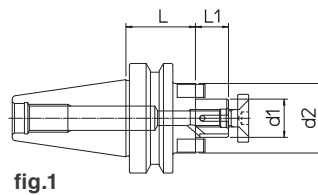


fig.1

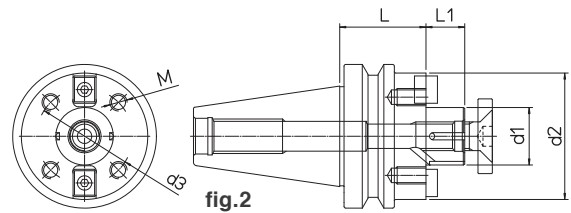
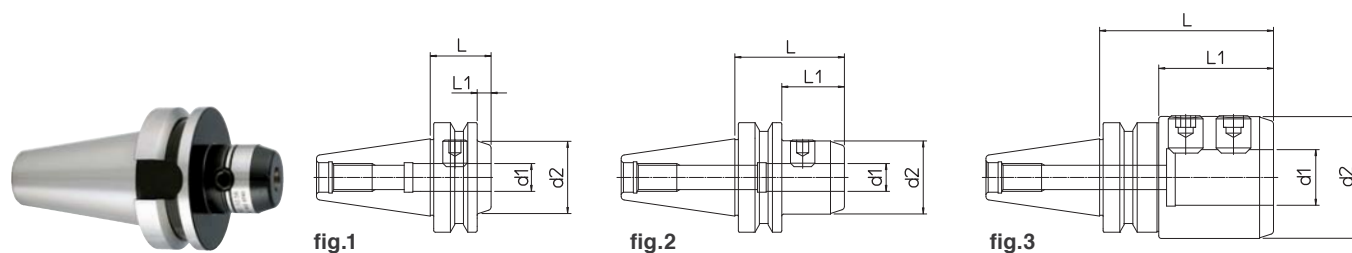


fig.2

BT	REF.	CODE	d1	d2	d3	M	L	L1	kg	fig.
40	MAS403 BT40-AD PF16.40	71MBT-A40PF1604	16	32			40	17	0.9	1
40	MAS403 BT40-AD PF22.40	71MBT-A40PF2204	22	40			40	19	1	1
40	MAS403 BT40-AD PF27.45	71MBT-A40PF2704	27	50			45	21	1.2	1
40	MAS403 BT40-AD PF32.50	71MBT-A40PF3205	32	60			50	24	1.7	1
40	MAS403 BT40-AD PF40.55	71MBT-A40PF4005	40	70			55	27	2.1	1
50	MAS403 BT50-AD PF16.50	71MBT-A50PF1605	16	32			50	17	2.4	1
50	MAS403 BT50-AD PF22.50	71MBT-A50PF2205	22	40			50	19	2.6	1
50	MAS403 BT50-AD PF27.55	71MBT-A50PF2705	27	50			55	21	2.7	1
50	MAS403 BT50-AD PF32.55	71MBT-A50PF3205	32	60			55	24	3.2	1
50	MAS403 BT50-AD PF40.60	71MBT-A50PF4006	40	88	66.7	M12	60	27	4.3	2
50	MAS403 BT50-AD PF60.80	71MBT-A50PF6008	60	128.5	101.6	M16	80	40	6.8	2

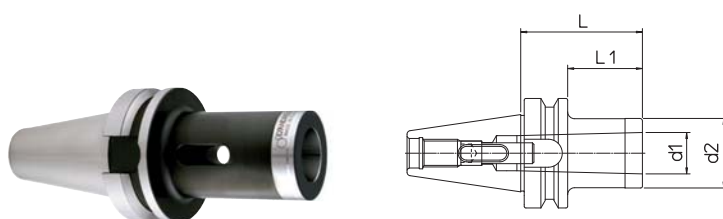
PF.. /40-60 BPS p.57

MAS 403 BT40 AD WELDON - WD DIN 1835-B



BT	REF.	CODE	d1 ^{H5}	d2	L	L1	kg	fig.
40	MAS403 BT40-AD WD06.50	71MBT-A40WD0605	6	23	50	23	0.8	1
40	MAS403 BT40-AD WD08.50	71MBT-A40WD0805	8	26	50	23	0.9	1
40	MAS403 BT40-AD WD10.56	71MBT-A40WD1005	10	30	56	29	1	1
40	MAS403 BT40-AD WD12.35	71MBT-A40WD1203	12	34	35	8	0.9	2
40	MAS403 BT40-AD WD12.110	71MBT-A40WD1211	12	34	110	83	1.4	1
40	MAS403 BT40-AD WD16.35	71MBT-A40WD1603	16	42	35	8	1	2
40	MAS403 BT40-AD WD16.110	71MBT-A40WD1611	16	42	110	83	1.7	1
40	MAS403 BT40-AD WD20.35	71MBT-A40WD2003	20	50	35	8	1.1	2
40	MAS403 BT40-AD WD20.110	71MBT-A40WD2011	20	50	110	83	2.1	1
40	MAS403 BT40-AD WD25.35	71MBT-A40WD2503	25	63	35	8	1	2
40	MAS403 BT40-AD WD25.100	71MBT-A40WD2510	25	63	100	73	2	3
40	MAS403 BT40-AD WD32.100	71MBT-A40WD3210	32	70	100	67	2.5	3
50	MAS403 BT50-AD WD10.70	71MBT-A50WD1007	10	30	70	32	3	1
50	MAS403 BT50-AD WD10.160	71MBT-A50WD1016	10	30	160	122	3.4	1
50	MAS403 BT50-AD WD12.70	71MBT-A50WD1207	12	34	70	32	3.1	1
50	MAS403 BT50-AD WD12.160	71MBT-A50WD1216	12	34	160	122	3.6	1
50	MAS403 BT50-AD WD16.80	71MBT-A50WD1608	16	42	80	42	3.3	1
50	MAS403 BT50-AD WD16.110	71MBT-A50WD1611	16	42	110	72	3.5	1
50	MAS403 BT50-AD WD20.80	71MBT-A50WD2008	20	50	80	42	3.5	1
50	MAS403 BT50-AD WD20.110	71MBT-A50WD2011	20	50	110	72	3.8	1
50	MAS403 BT50-AD WD25.100	71MBT-A50WD2510	25	63	100	62	4.5	2
50	MAS403 BT50-AD WD25.125	71MBT-A50WD2512	25	63	125	87	5	2
50	MAS403 BT50-AD WD32.100	71MBT-A50WD3210	32	70	100	62	5.6	2
50	MAS403 BT50-AD WD40.110	71MBT-A50WD4011	40	80	110	72	5.8	2

MAS 403 BT40 A MORSE - CM DIN 228 AB



BT	REF.	CODE	MORSE	d1	d2	L	L1	kg
40	MAS403 BT40-A CM2.50 A-B	71MBT-40-CMB205	2	17.780	32	50	23	1
40	MAS403 BT40-A CM3.70 A-B	71MBT-40-CMB307	3	23.825	40	70	43	1.1
50	MAS403 BT50-A CM2.60 A-B	71MBT-50-CMB206	2	17.780	32	60	22	2.6
50	MAS403 BT50-A CM3.60 A-B	71MBT-50-CMB306	3	23.825	40	60	22	2.7
50	MAS403 BT50-A CM4.80 A-B	71MBT-50-CMB408	4	31.267	48	80	42	2.9